

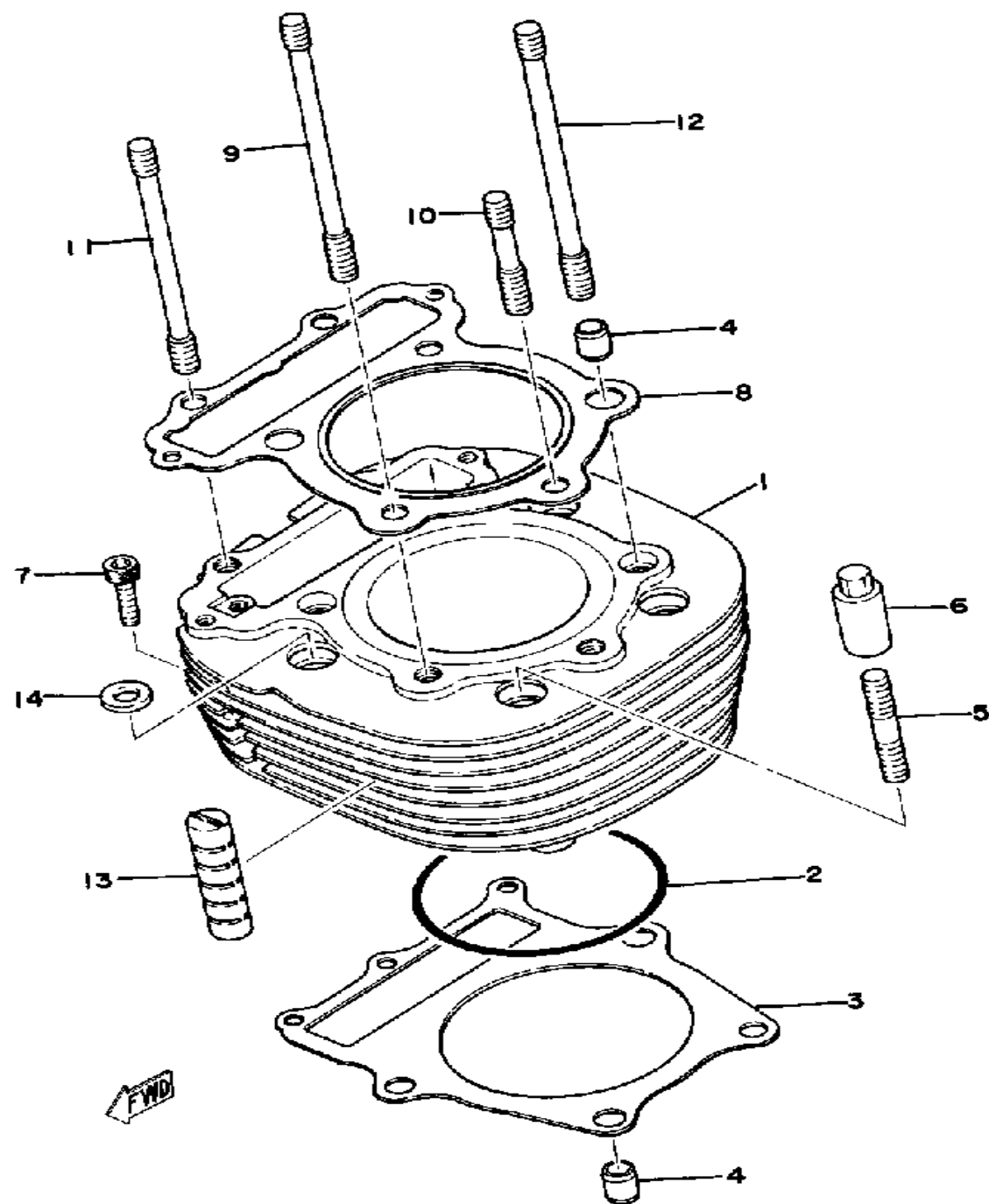
YAMAHA

GENUINE

PARTS CATALOGUE

MOTORCYCLE

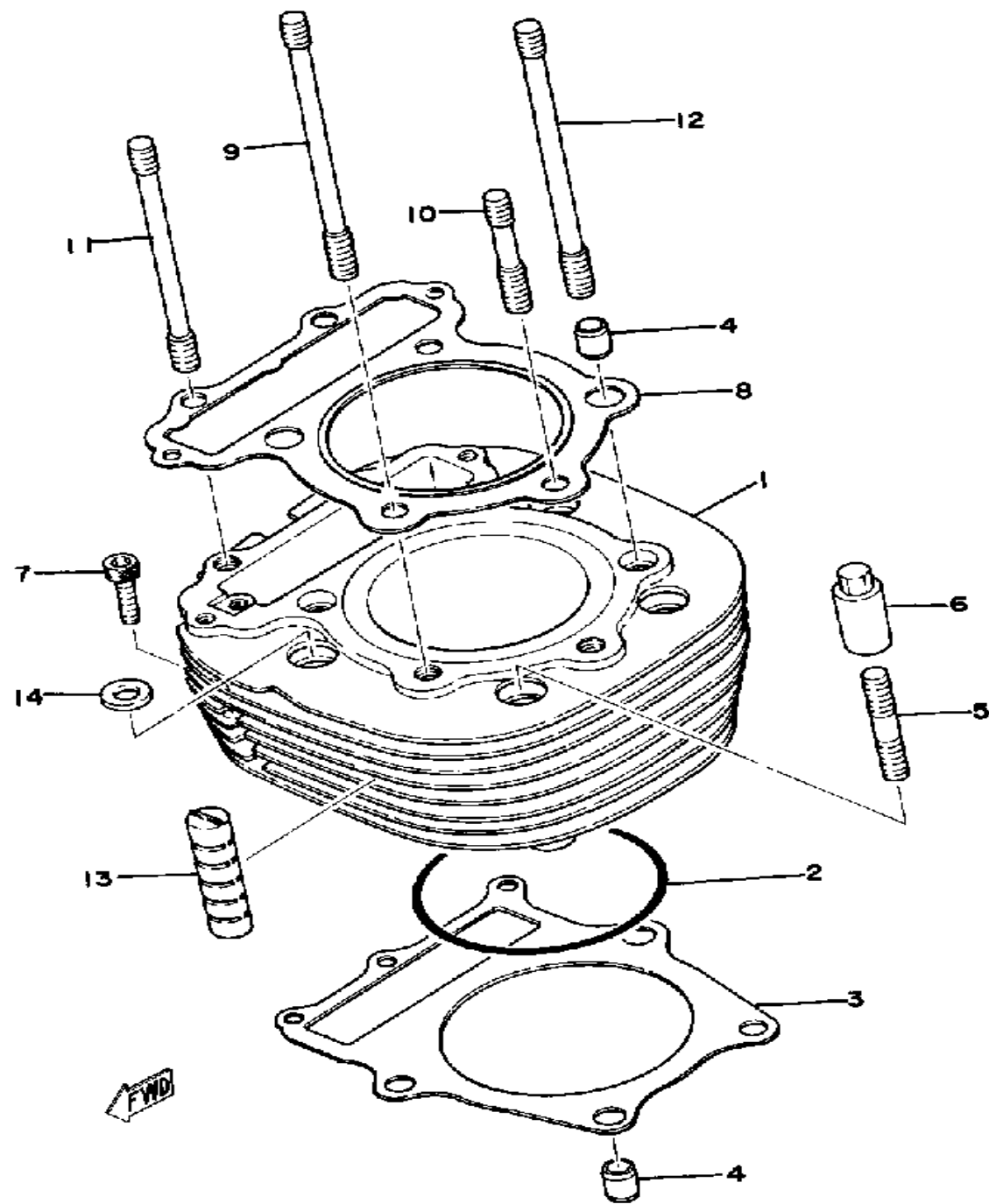
CYLINDER HEAD



Ref. No.	Part Number	Description	Qty	Remarks
1	(2H0-11110-00-R4)	CYLINDER HEAD ASSEMBLY	1	
	(99999-00953-00)	CYLINDER HEAD ASSEMBLY	1	
	583-13161-01-00	. PIPE, DELIVERY 1	1	
2	93210-14299-00	. O-RING	2	
3	583-11133-11-00	. GDE, INTK VLV 1 O/S	1	
4	583-11134-11-00	. GDE, EXST VLV 1 O/S (1ST O.S.)	1	
5	99530-14016-00	. PIN, DOWEL	2	
6	90176-10049-00	NUT, CROWN	4	
7	90176-10049-00	NUT, CROWN	1	
8	90201-10124-00	WASHER, PLATE	5	
9	95333-08600-00	NUT, HEXAGON	2	
10	92901-08600-00	WASHER	2	
11	91316-06055-00	BOLT, SOCKET HEAD	2	
12	91316-06025-00	BOLT	3	
13	(3H6-W0001-90-00)	GASKT KIT TE SR5 0		SEE GRID G-1 FOR KIT COMPONENT
	583-11186-00-00	COVER, CYLINDER. HEAD 2	2	
14	93210-49296-00	O-RING	2	
15	91316-06018-00	BOLT, SOCKET HEAD	4	
16	90338-18067-00	PLUG, SPEC'L SHAPE	1	
17	90109-06418-00	BOLT	2	
18	90430-06014-00	GASKET	2	
19	90340-14038-00	PLUG, STRAIGHT SCRW	2	
20	90430-14043-00	GASKET	2	
21	2J2-11197-00-00	PLUG, BLIND	1	
22	93104-12054-00	OIL SEAL, SO-TYPE	1	
23	583-12288-00-00	CAM, DCOMP	1	
24	90508-16303-00	SPRING, TORSION	1	

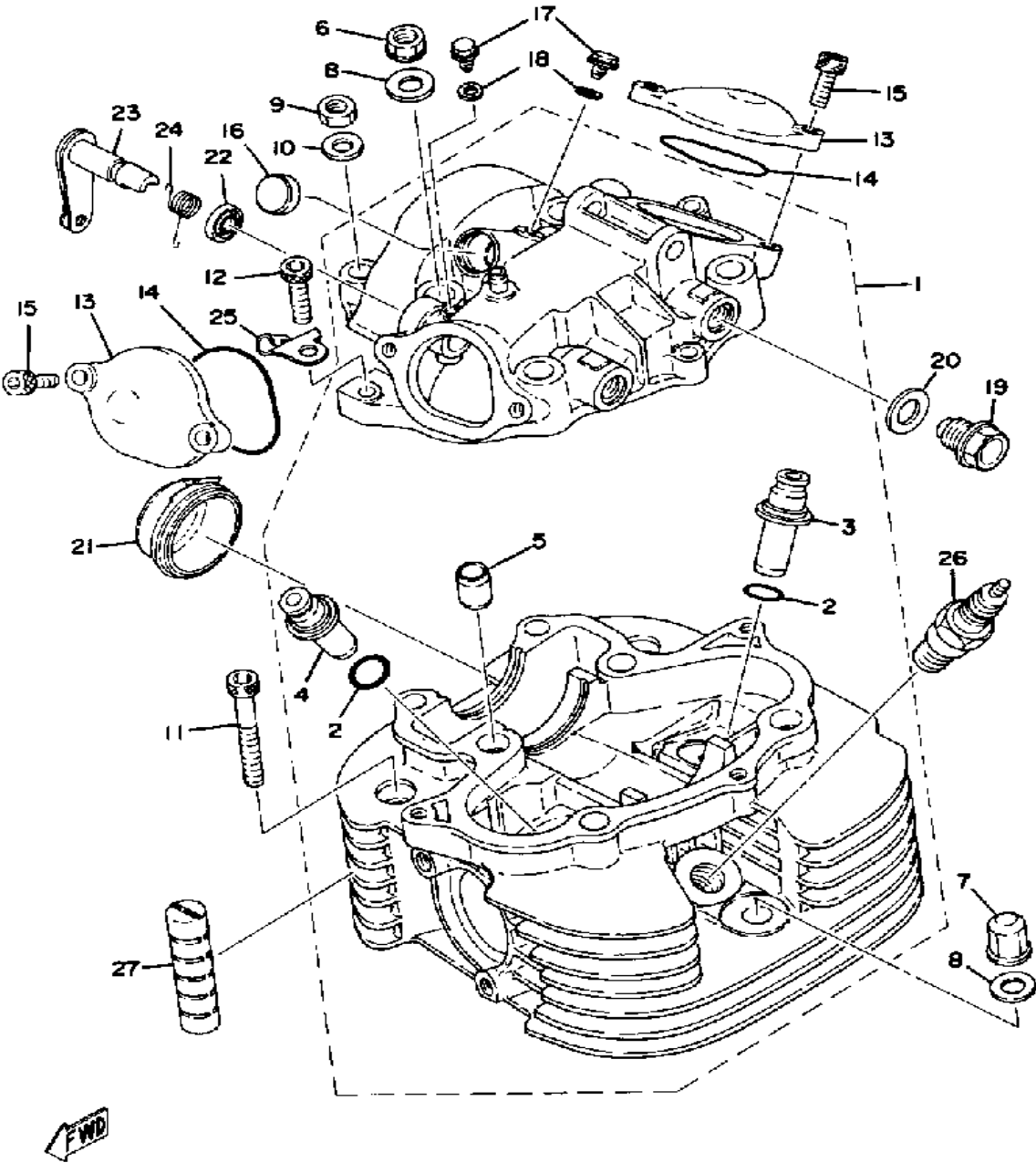
CONTINUED ON NEXT FRAME ➤

CYLINDER HEAD



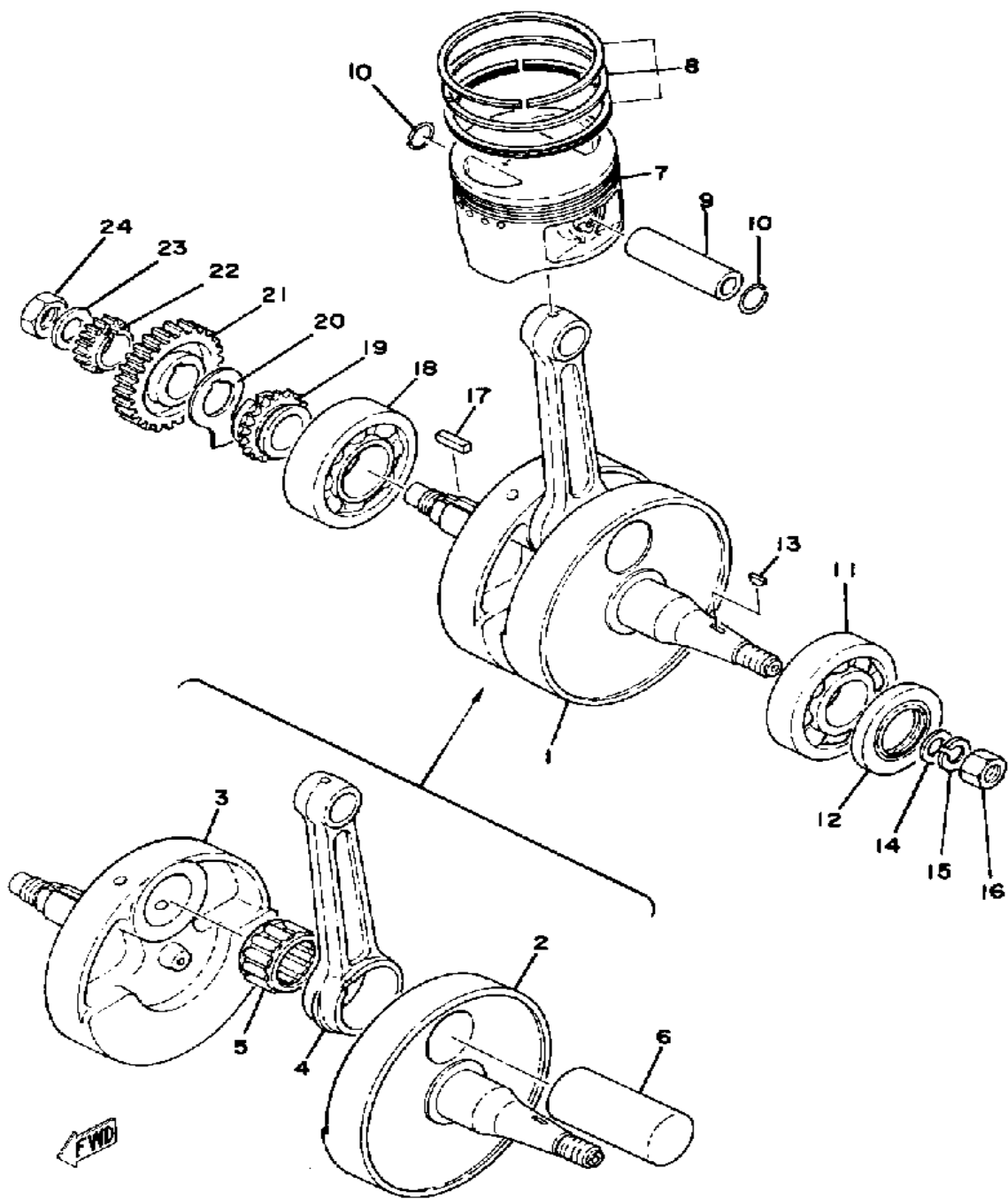
Ref. No.	Part Number	Description	Qty	Remarks
25	583-12283-00-00	BRACKET, DCOMP	1	
26	NGK-BP7ES-00-00	PLUG, SPARK (NGK BP-7ES) .	1	
27	(3H6-W0001-90-00)	GASKT KIT TE SR5 0		SEE GRID G-1 FOR KIT COMPONENT
	583-11127-00-00	ABSORBER 3	2	

CYLINDER



Ref. No.	Part Number	Description	Qty	Remarks
1	583-11310-00-00	CYLINDER	1	
2	93210-92295-00	O-RING	1	
3	583-11351-00-00	GASKET, CYLINDER	1	
4	99530-14016-00	PIN, DOWEL	4	
5	90116-10087-00	BOLT, STUD	4	
6	90179-10201-00	NUT	4	
7	90110-06138-00	BOLT, HEX SKT HEAD	3	
8	2J2-11181-09-00	GASKET, CYLINDER HEAD 1 ..	1	
9	90116-10222-00	BOLT, STUD	2	
10	90116-10223-00	BOLT, STUD	1	
11	90116-08190-00	BOLT, STUD	2	
12	90116-10225-00	BOLT, STUD	2	
13	583-11127-00-00	ABSORBER 3	2	
14	90201-10590-00	WASHER, PLATE	4	

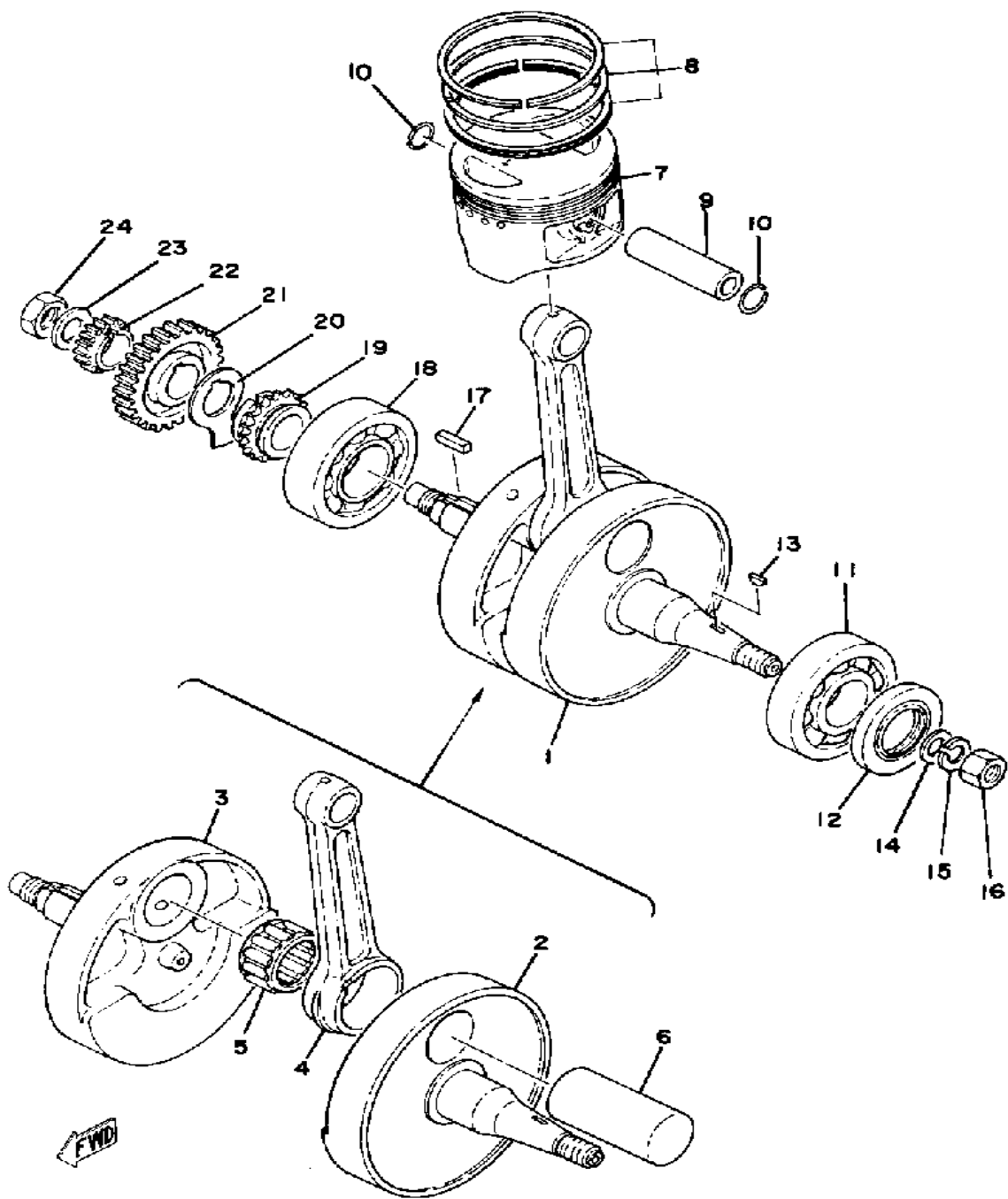
CRANKSHAFT - PISTON



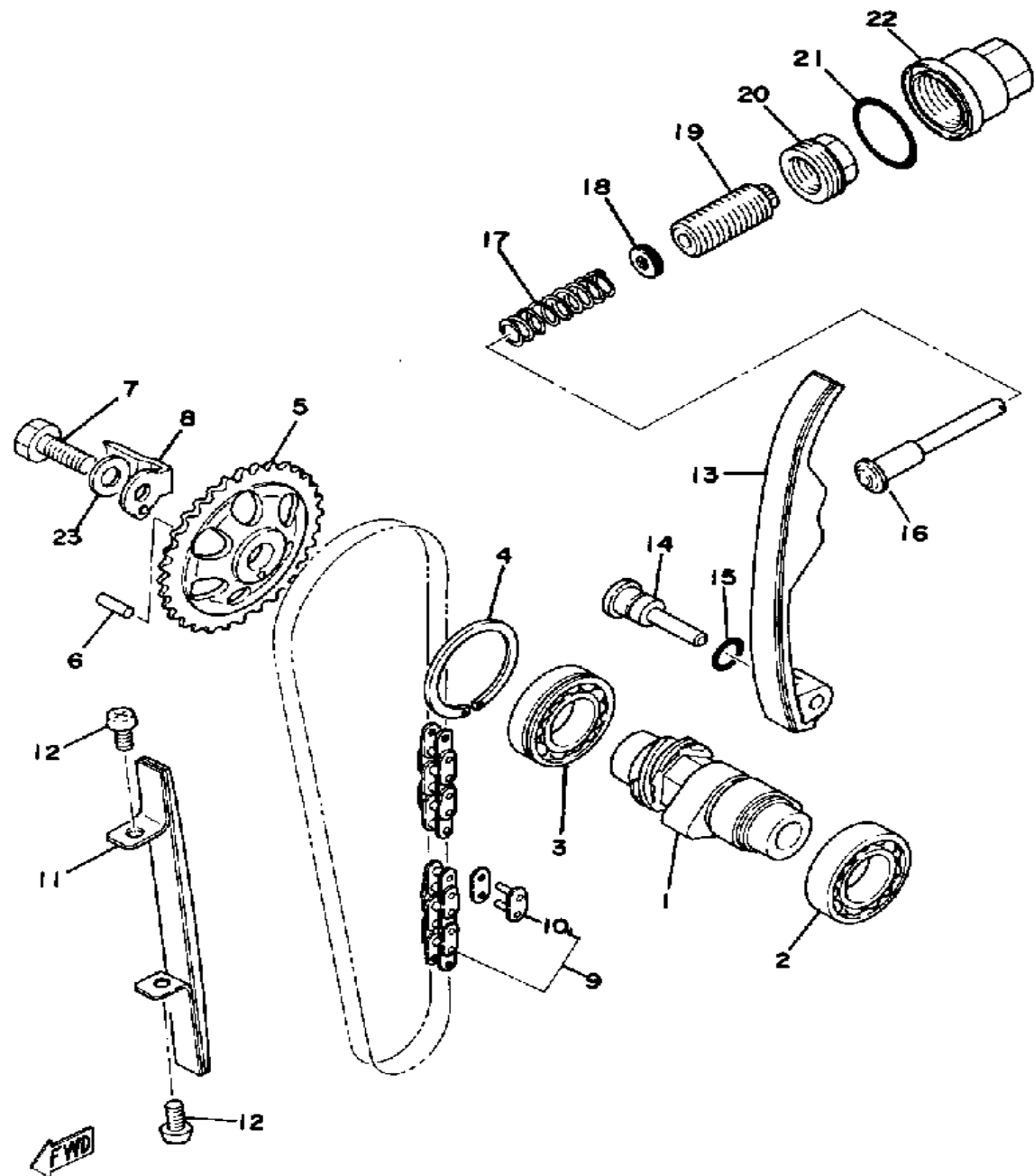
Ref. No.	Part Number	Description	Qty	Remarks
1	(583-11400-00-00)	CRANKSHAFT ASSEMBLY ...	1	
2	(583-11412-00-00)	CRANK 1	1	
3	(583-11422-00-00)	CRANK 2	1	
4	583-11651-00-00	. ROD, CONNECTING	1	
5	93310-635A5-00	. BEARING, CYLINDER.# 0 ...	1	
6	583-11681-00-00	. PIN, CRANK 1	1	
7	(583-11630-22-00)	PISTON KIT 2ND	1	
	583-11610-02-00	PISTON RINGSET STD (583-11610-01)	1	
	583-11610-12-00	PISTON RINGSET 1ST (583-11610-11)	1	AP
	583-11610-22-00	PISTON RINGSET 2ND (583-11610-21)	1	AP
	583-11610-32-00	PISTON RINGSET 3RD (583-11610-31)	1	AP
	583-11610-42-00	PISTON RINGSET 4TH (4TH O/S)	1	AP
	583-11630-02-00	PISTON KIT STD (STD) (583-11630-00)	1	
	583-11630-12-00	PISTON KIT 1ST (1ST O.S.) (583-11630-10)	1	
	583-11630-32-00	PISTON KIT 3RD (3RD O.S.) ..	1	
	583-11630-42-00	PISTON KIT 4TH (4TH O.S.) ...	1	
	583-11631-02-95	PISTON STD	1	
	583-11635-02-00	PISTON 1 O/S 0.5	1	
	583-11635-02-00	PISTON 1 O/S 0.5	1	AP
	583-11636-02-00	PISTON 2 O/S 0.0	1	AP
	583-11637-02-00	PISTON 3 O/S 0.5	1	AP
	583-11638-02-00	PISTON 4 O/S 1.0	1	AP
9	11H-11633-00-00	PIN, PISTON (583-11633-00) ..	1	
10	93450-22027-00	CIRCLIP	2	

CONTINUED ON NEXT FRAME ➤

CRANKSHAFT - PISTON

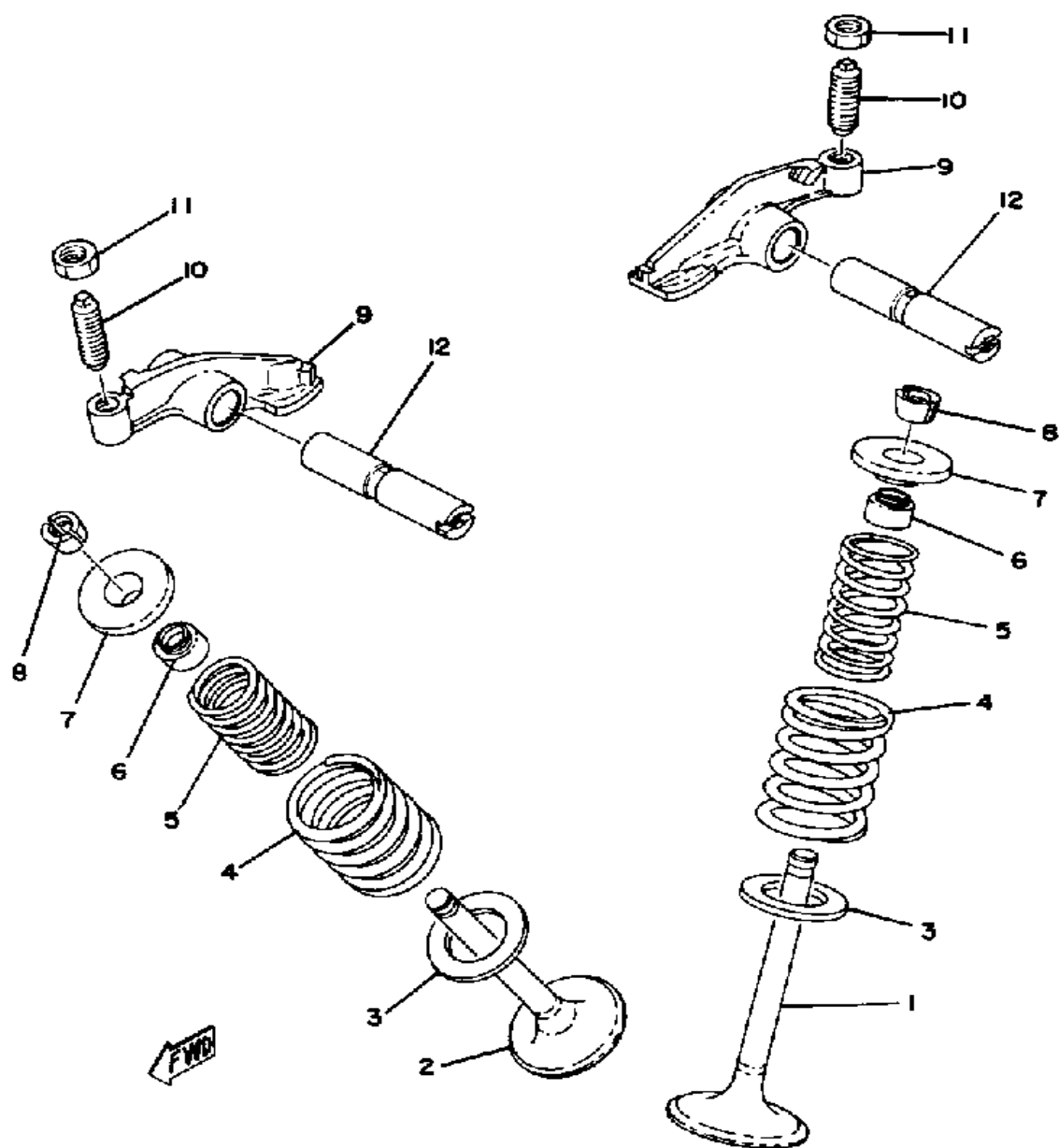


Ref. No.	Part Number	Description	Qty	Remarks
11	93306-30630-00	BEARING	1	
12	93102-30145-00	OIL SEAL, SD-TYPE	1	
13	90280-16053-00	KEY, WOODRUFF	1	
14	90201-12593-00	WASHER, PLATE	1	
15	92901-12100-00	WASHER, SPRING	1	
16	90170-12347-00	NUT, HEXAGON	1	
17	90282-07021-00	KEY, STRAIGHT	1	
18	93306-30702-00	BEARING (B6307)	1	
19	583-11549-00-00	SPROCKET, CAM CHAIN	1	
20	583-11533-00-00	PLATE, ABSORBER	1	
21	583-16111-00-00	GEAR, PRI DRIVE	1	
22	583-11536-00-00	GEAR, DRIVE (21T)	1	
23	90208-16019-00	WASHER, CONICAL SPRING ..	1	
24	90170-16182-00	NUT	1	



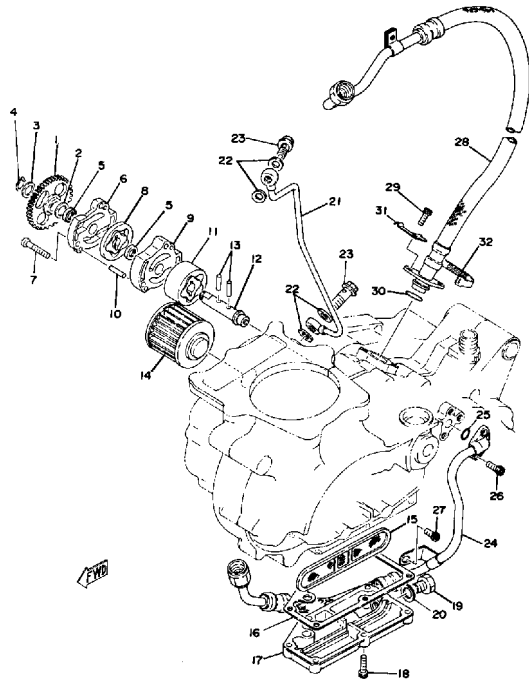
CAMSHAFT - CHAIN

Ref. No.	Part Number	Description	Qty	Remarks
1	583-12171-01-00	CAMSHAFT 1	1	
2	93306-00501-00	BEARING (B6005)	1	
3	93306-00519-00	BEARING	1	
4	93440-47044-00	CIRCLIP, OUTER	1	
5	583-12176-00-00	SPROCKET, CAM CHAIN	1	
6	93604-16092-00	PIN, DOWEL	1	
7	90101-10303-00	BOLT	1	
8	1T1-12279-00-00	PLATE	1	
9	94500-02106-00	CHAIN	1	
10	94600-02001-00	. JOINT, CHAIN (BF05M)	1	
11	583-12231-00-00	GUIDE, STOPPER 1	1	
12	98503-06014-00	SCREW, PAN HEAD (92502-06016)	2	
13	341-12241-03-00	GUIDE, STOPPER 2	1	
14	583-12247-00-00	SHAFT, TENSIONER	1	
15	93210-12152-00	O-RING	1	
16	583-12217-00-00	ROD, CHN TENSIONER	1	
17	90501-14095-00	SPRING, COMPRESSION	1	
18	583-12232-01-00	DAMPER (583-12232-00)	1	
19	90149-18190-00	UNAVAILABLE IN PRICE BOOK (90149-18100)	1	
20	90179-18199-00	NUT, SPEC'L SHAPE	1	
21	93210-32172-00	O-RING	1	
22	583-12212-00-00	CASE, CHAIN TENSNR	1	
23	90201-10774-00	WASHER, PLATE	1	



VALVE

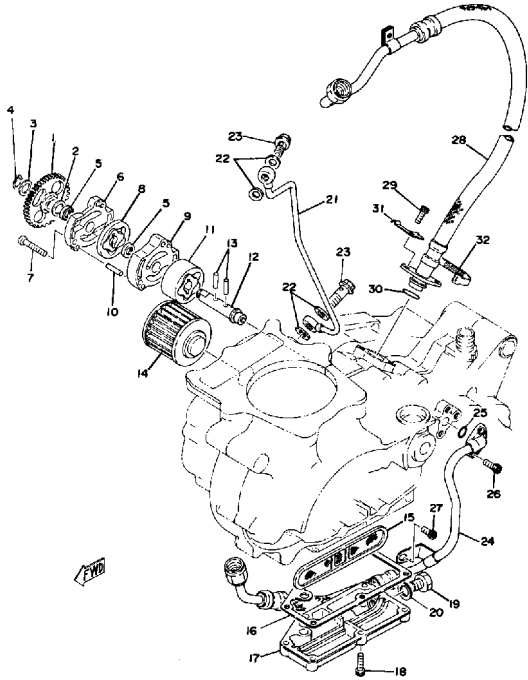
Ref. No.	Part Number	Description	Qty	Remarks
1	583-12111-00-00	VALVE, INTAKE	1	
2	583-12121-00-00	VALVE, EXHAUST	1	
3	256-12116-01-00	SEAT, VALVE SPRING	2	
4	90501-44455-00	SPRING, COMPRESSION	2	
5	90501-31454-00	SPRING, COMPRESSION	2	
6	341-12119-02-00	SEAL, VALVE STEM	2	
7	256-12117-02-00	RETAINER, VALVE SPR	2	
8	341-12118-00-00	COTTER, VALVE	4	
9	583-12151-00-00	ARM, VALVE ROCKER	2	
10	90149-08098-00	SCREW, SPEC'L SHAPE	2	
11	90170-08173-00	NUT, HEXAGON	2	
12	583-12156-01-00	SHAFT, ROCKER	2	



OIL PUMP - OIL FILTER

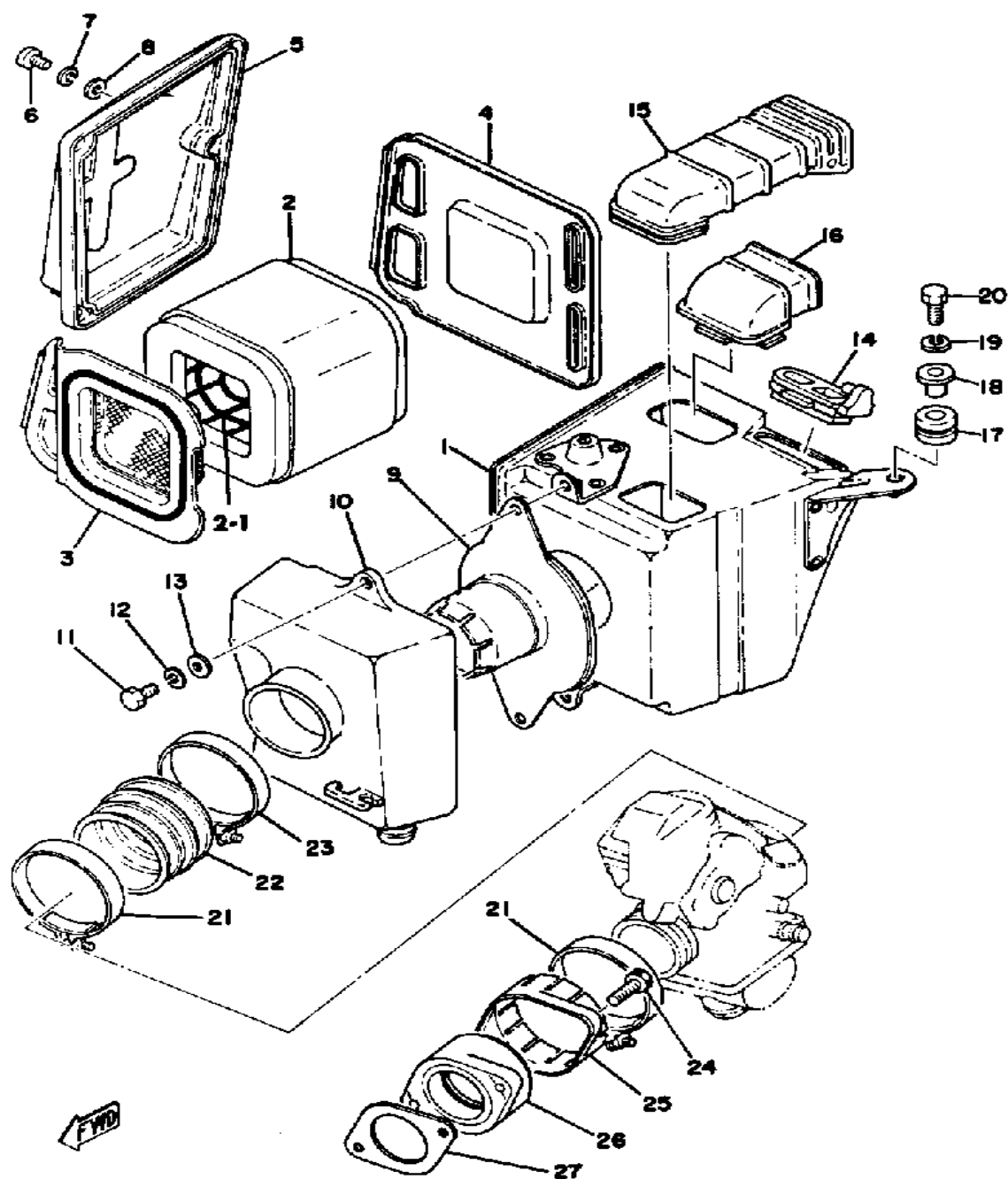
Ref. No.	Part Number	Description	Qty	Remarks
1	583-13325-00-00	GEAR, PUMP DRIVEN	1	
2	90201-12166-00	WASHER, PLATE	1	
3	90201-10119-00	WASHER, PLATE	1	
4	99009-10400-00	CIRCLIP	1	
5	93104-11038-00	OIL SEAL, SO-TYPE	2	
6	98580-06018-00	. SCREW, PAN HEAD	2	
	99999-00996-00	. CVR/HOUSING COMP	1	
7	98580-06030-00	SCREW PAN HEAD	3	
8	583-13310-01-00	ROTOR ASSEMBLY 1	1	
9	98580-06018-00	. SCREW, PAN HEAD	2	
	99999-00996-00	. CVR/HOUSING COMP	1	
10	93604-22050-00	PIN, DOWEL	2	
11	583-13320-00-00	ROTOR ASSEMBLY 2	1	
12	583-13314-00-00	SHAFT, PUMP	1	
13	93603-17070-00	PIN, DOWEL	2	
14	4X7-13440-90-00	ELMNT ASSEMBLY, OIL CLNR	1	
15	583-13411-00-00	STRAINER, OIL	1	
16	583-13414-00-00	GASKET, STRNR COVER	1	
17	583-13417-01-00	COVER, STRAINER	1	
18	91316-06020-00	BOLT, SOCKET HEAD	6	
19	90101-14259-00	BOLT	1	
20	214-11198-01-00	GASKET	1	
21	583-13161-01-00	PIPE, DELIVERY 1	1	
22	90201-08087-00	WASHER, PLATE	4	
23	90401-08038-00	BOLT, UNION	2	
24	583-13464-00-00	HOSE, OIL 1	1	
25	93210-10197-00	O-RING	1	
26	91316-06016-00	BOLT, SOCKET HEAD	2	
27	91316-06012-00	BOLT, SOCKET HEAD	1	

CONTINUED ON NEXT FRAME ➤



OIL PUMP - OIL FILTER

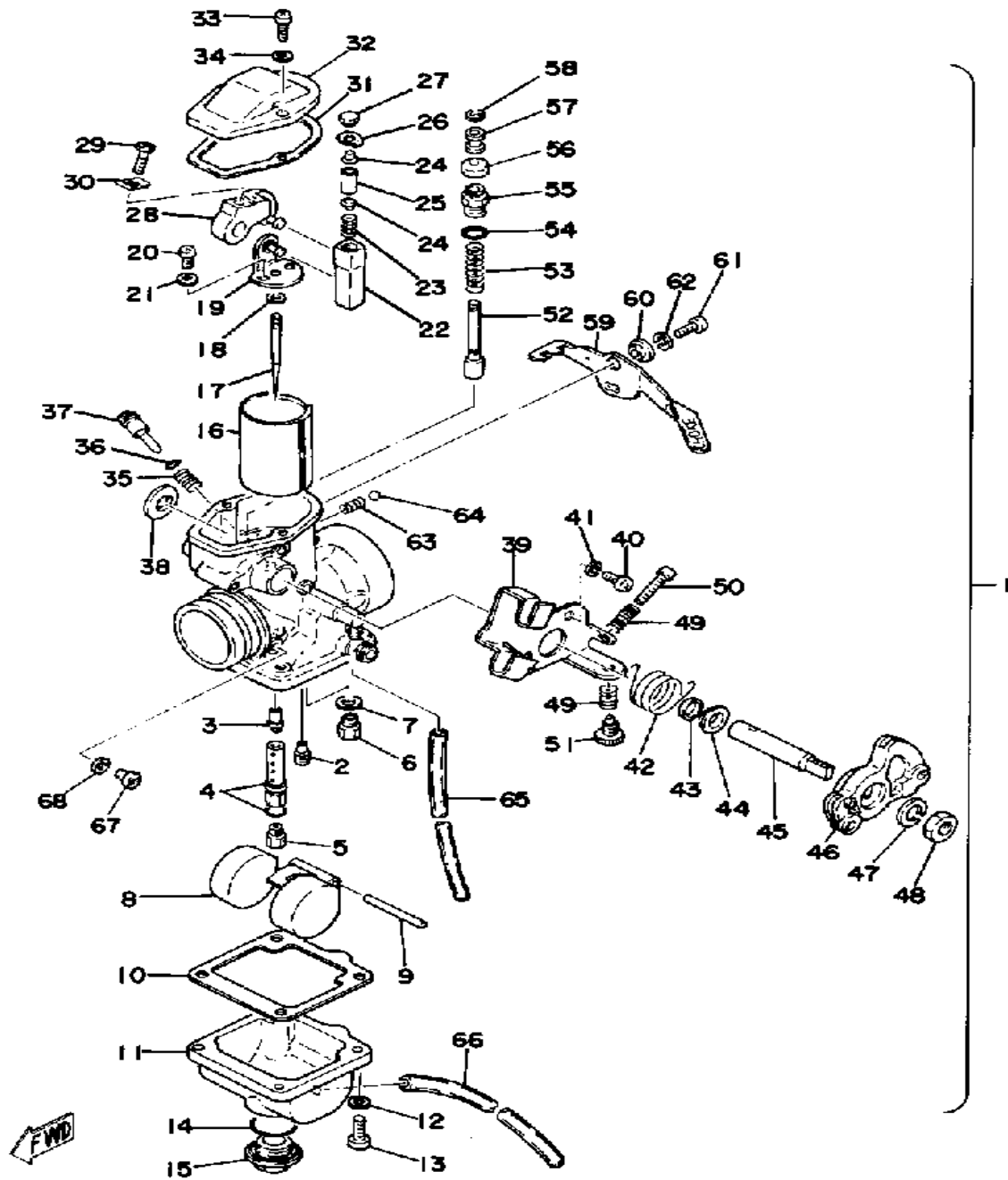
Ref. No.	Part Number	Description	Qty	Remarks
28	583-13465-02-00	HOSE, OIL 2	1	
29	91316-06016-00	BOLT, SOCKET HEAD	2	
30	93210-15171-00	O-RING	1	
31	90465-06077-00	CLAMP	1	
32	437-83936-01-00	BAND, SWITCH CORD	1	



AIR FILTER

Ref. No.	Part Number	Description	Qty	Remarks
1	583-14411-01-00	CASE, AIR CLEANER 1	1	
2	583-14451-09-00	ELEMENT, AIR CLNR	1	
3	583-14468-01-00	PLATE, ELEMENT FTNG	1	
4	583-14472-00-00	PLATE, ELEMENT	1	
5	583-14422-00-00	CAP, CLEANER CASE 2	1	
6	98580-05012-00	SCREW, PAN HEAD	3	
7	92990-05100-00	WASHER, SPRING	3	
8	92901-05600-00	WASHER, PLATE	3	
9	583-14485-00-00	PIPE, JOINT	1	
10	583-14421-00-00	CASE, AIR CLEANER 2	1	
11	97011-06020-00	BOLT	2	
12	92995-06100-00	WASHER, SPRING	2	
13	92901-06600-00	WASHER	2	
14	1T1-14437-00-00	DUCT	1	
15	583-14431-00-00	SILENCER, INTAKE 1	1	
16	1T1-14441-00-00	SILENCER, INTAKE 2	1	
17	90480-14023-00	GROMMET	2	
18	90387-07391-00	COLLAR	2	
19	92995-06100-00	WASHER, SPRING	2	
20	97011-06025-00	BOLT (97001-06025)	2	
21	90460-58015-00	CLAMP, HOSE	2	
22	583-14453-00-00	JOINT, AIR CLNR 1	1	
23	90460-61063-00	CLAMP, HOSE (256-14455-00) .	1	
24	91316-06025-00	BOLT	2	
25	256-13564-00-00	COVER, CARB.JOINT	1	
26	583-13565-01-00	JOINT, CARBURETOR	1	
27	583-13556-01-00	GASKET, MANIFOLD	1	
2-1	583-14458-00-00	GUIDE, ELEMENT	1	

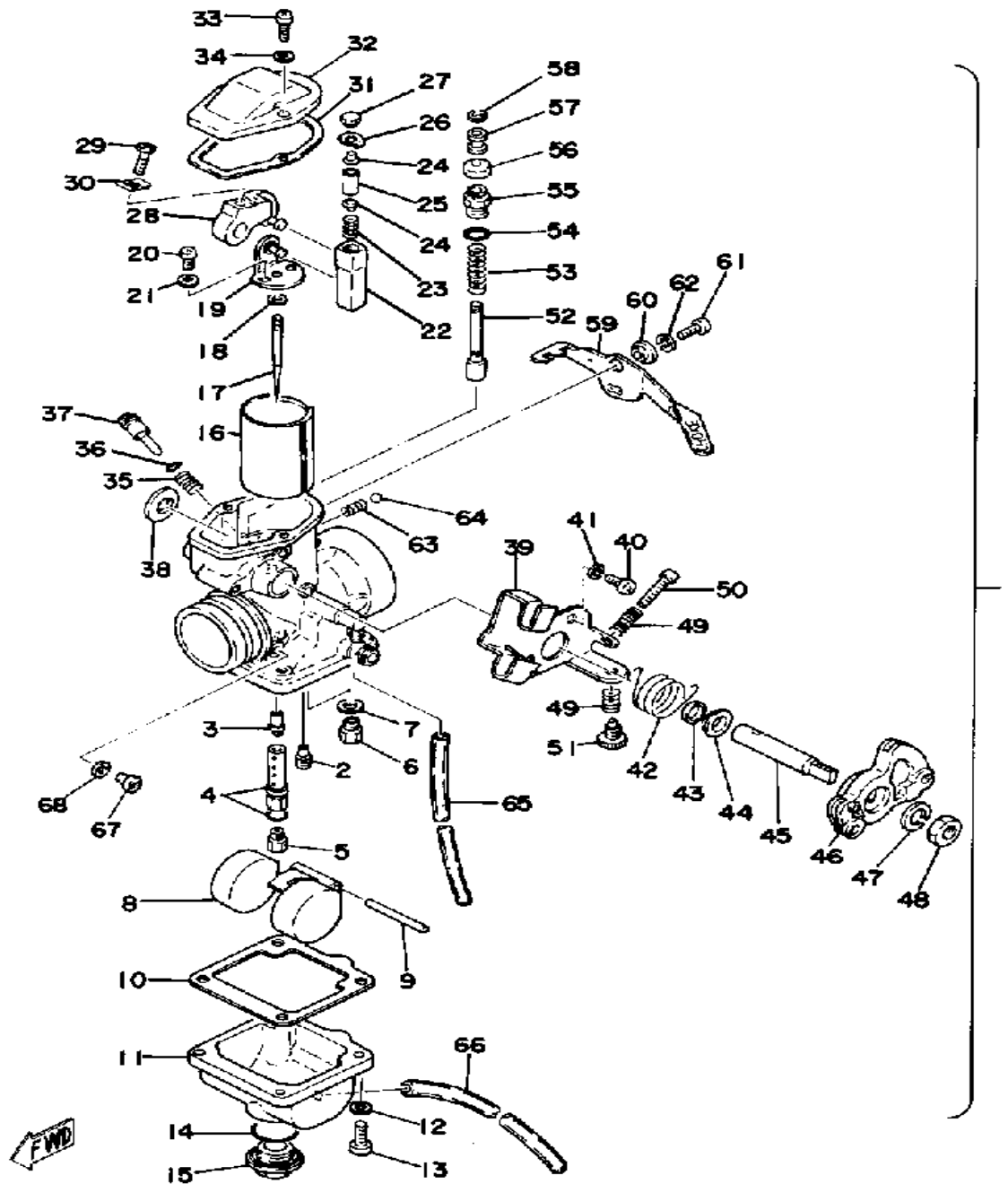
CARBURETOR



Ref. No.	Part Number	Description	Qty	Remarks
1	(1T1-14101-60-00)	CARBURETOR ASSEMBLY 1	1	
2	193-14142-30-A0	. JET, PILOT #30 (#30)	1	
3	583-14141-52-00	. NOZZLE, MAIN (Q-2)	1	
4	583-14148-00-00	. PIPE	1	
5	137-14143-46-A1	. JET, MAIN (#230)	1	U.R.
	137-14143-48-A1	. JET, MAIN (#240)	1	U.R.
	137-14143-50-A1	. JET, MAIN (#250)	1	U.R.
6	23L-14107-25-00	. NEEDLE VALVE SET	1	
7	214-14195-00-00	. WASHER, NEEDLE VALVE	1	
8	583-14185-00-00	. FLOAT	1	
9	127-14186-00-00	. PIN, FLOAT	1	
10	583-14184-00-00	. GASKET, FLOAT CHMBR	1	
11	(1E6-14181-12-00)	BODY, FLOAT CHMBR 1	1	
12	92995-06100-00	. WASHER, SPRING	4	
13	98503-06014-00	. SCREW, PAN HEAD (92502-06016)	4	
14	558-14147-00-00	. O-RING	1	
15	500-14115-00-00	. PLUG, SCREW	1	
16	(583-14112-40-00)	VALVE, THROTTLE 1	1	
17	1T1-14116-02-00	. NEEDLE	1	
18	164-14137-00-00	. CLIP	1	
19	(583-14291-00-00)	BRACKET 1	1	
20	98511-04012-00	. SCREW, PAN HEAD	2	
21	92901-04100-00	. WASHER, SPRING	2	
22	(583-14274-00-00)	CONNECTOR	1	
23	(583-14933-00-00)	SPRING, DIAPHRAGM	1	
24	(583-14558-00-00)	WASHER	2	
25	(583-14386-00-00)	PIN, FLOAT	1	
26	(583-14951-00-00)	WASHER	1	

CONTINUED ON NEXT FRAME ➤

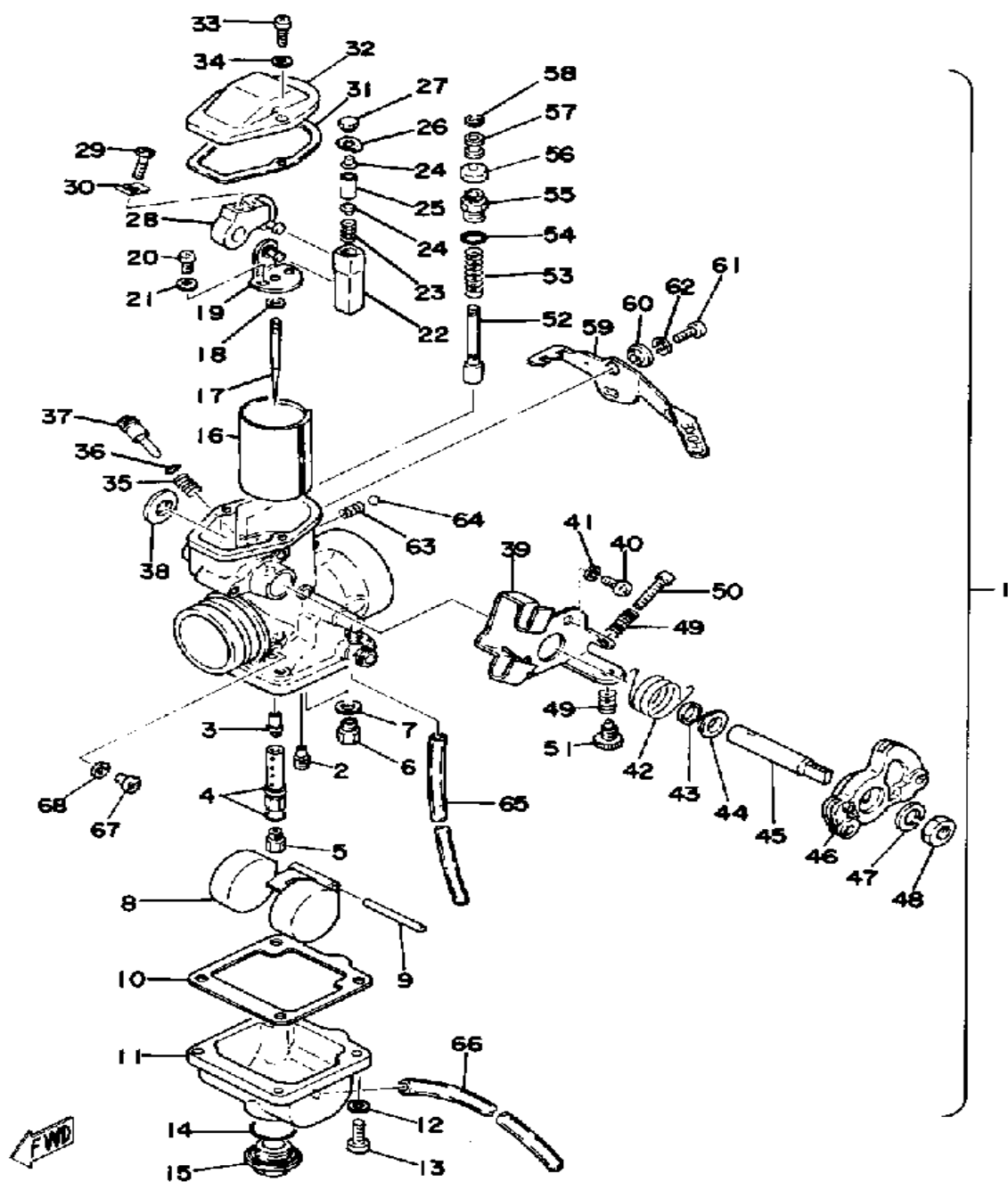
CARBURETOR



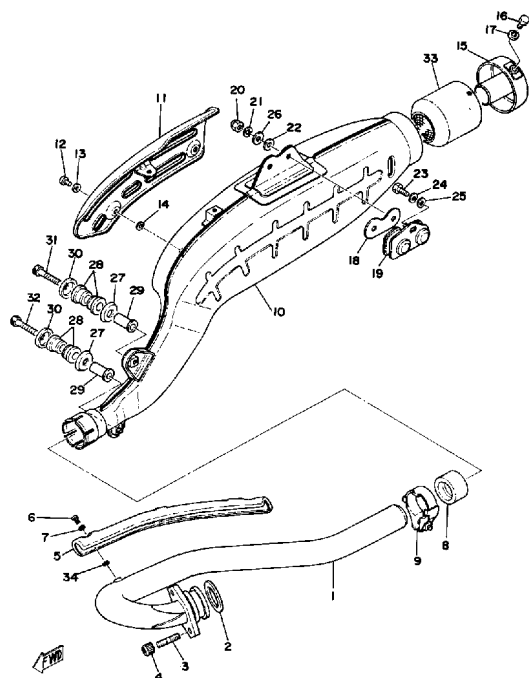
Ref. No.	Part Number	Description	Qty	Remarks
27	(583-14216-00-00)	SCREW	1	
28	(583-14292-00-00)	LEVER, THROTTL.VALV	1	
29	583-14592-00-00	. SCREW	1	
30	(583-14597-00-00)	WASHER	1	
31	583-14536-00-00	. GASKET	1	
32	(583-14158-00-00)	TOP, MIXING CHAMBER	1	
33	98503-04014-00	. SCREW, PAN HEAD	2	
34	92901-04100-00	. WASHER, SPRING	2	
35	127-14134-00-00	. SPRING, AIR ADJUSTING ...	1	
36	354-14147-00-00	. O-RING	1	
37	10W-14104-00-00	. AIR SCREW SET	1	
38	583-14264-00-00	. SPACER	1	
39	(583-14571-00-00)	BRACKET, THROTTLE	1	
40	98580-05012-00	. SCREW, PAN HEAD	2	
41	92990-05100-00	. WASHER, SPRING	2	
42	583-14131-01-00	. SPRING, THRTL VALVE	1	
43	583-14239-01-00	. SEAL	1	
44	583-14265-00-00	. COLLAR	1	
45	(583-14215-00-00)	SHAFT, THRTL LEVER	1	
46	(583-14573-00-00)	LEVER	1	
47	92990-08100-00	. WASHER	1	
48	812-14594-00-00	. NUT	1	
49	583-14133-00-00	. SPRING, THRTL STOP	2	
50	583-14245-00-00	. SCREW, GUIDE	1	
51	(583-14121-00-00)	SCREW, THRTL STOP	1	
52	(583-14171-01-00)	PLUNGER, STARTER	1	
53	500-14135-00-00	. SPRING, PLUNGER	1	
54	583-14562-00-00	. O-RING	1	
55	583-14174-00-00	. CAP, PLUNGER	1	

CONTINUED ON NEXT FRAME ➤

CARBURETOR



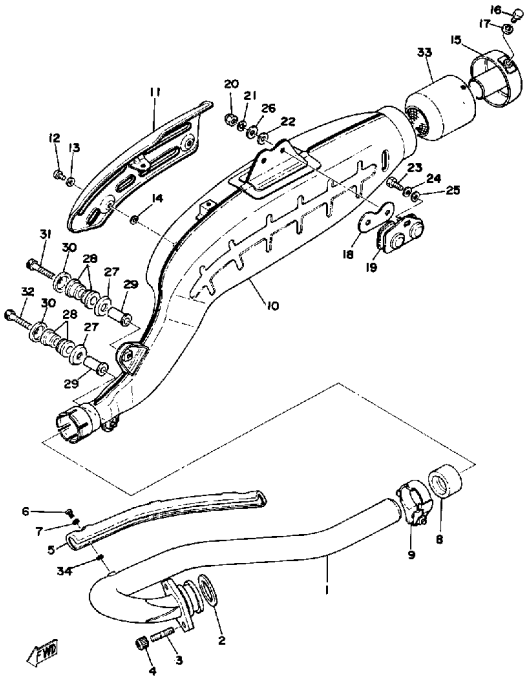
Ref. No.	Part Number	Description	Qty	Remarks
56	802-14173-00-00	. COVER, PLUNGER CAP	1	
57	583-14918-00-00	. RING	1	
58	737-14137-00-00	. CLIP	1	
59	583-14175-01-00	. LEVER, STARTER 1	1	
60	583-14594-00-00	. NUT	1	
61	98580-06012-00	. SCREW, PAN HEAD	1	
62	92995-06100-00	. WASHER, SPRING	1	
63	583-14589-00-00	. SPRING	1	
64	93501-08001-00	. BALL	1	
65	90445-081F2-00	. HOSE	1	
66	510-14197-00-00	. PIPE (43214-19700-00)	1	
67	341-14991-00-00	. SCREW	1	
68	584-14956-00-00	. WASHER	1	
4-1	583-14561-00-00	.. O-RING	1	



EXHAUST

Ref. No.	Part Number	Description	Qty	Remarks
1	1T1-14611-03-00	PIPE, EXHAUST L	1	
2	90430-38054-00	GASKET	1	
3	95621-08615-00	BOLT, STUD	2	
4	90179-08004-00	NUT	2	
5	1T1-14628-00-00	PROTC, EXHAUST PIPE	1	
6	98906-06010-00	SCREW, BIND	2	
7	90202-05187-00	WASHER, PLATE	2	
8	4X7-14714-00-00	GASKET, MUFFLER	1	
9	1T1-14788-00-00	BAND, SILENCER	1	
10	(1T1-14711-32-00)	MUFFLER L	1	
11	1T1-14718-00-00	PROTECTOR, MUFF 1	1	
12	98906-06010-00	SCREW, BIND	3	
13	90202-05187-00	WASHER, PLATE	3	
14	3WX-14766-00-00	WASHER, PROTECTOR	3	
15	1T1-14752-01-00	PIPE, OUTLET	1	
16	97011-06010-00	BOLT	2	
17	92995-06100-00	WASHER, SPRING	2	
18	1T1-14755-01-00	GASKET, SILENCER	1	
19	1T1-14791-02-00	STAY, MUFFLER	1	
20	95611-08100-00	NUT, U	2	
21	92990-08100-00	WASHER	2	
22	90202-08103-00	WASHER, PLATE	2	
23	97313-08020-00	BOLT, HEXAGON	1	
24	92990-08100-00	WASHER	1	
25	92901-08600-00	WASHER	1	
26	90201-08326-00	WASHER, PLATE	2	
27	90209-12163-00	WASHER, SPEC'L SHAP	2	
28	1T1-14747-01-00	DAMPER, MUFFLER	4	
29	90387-08572-00	COLLAR	2	

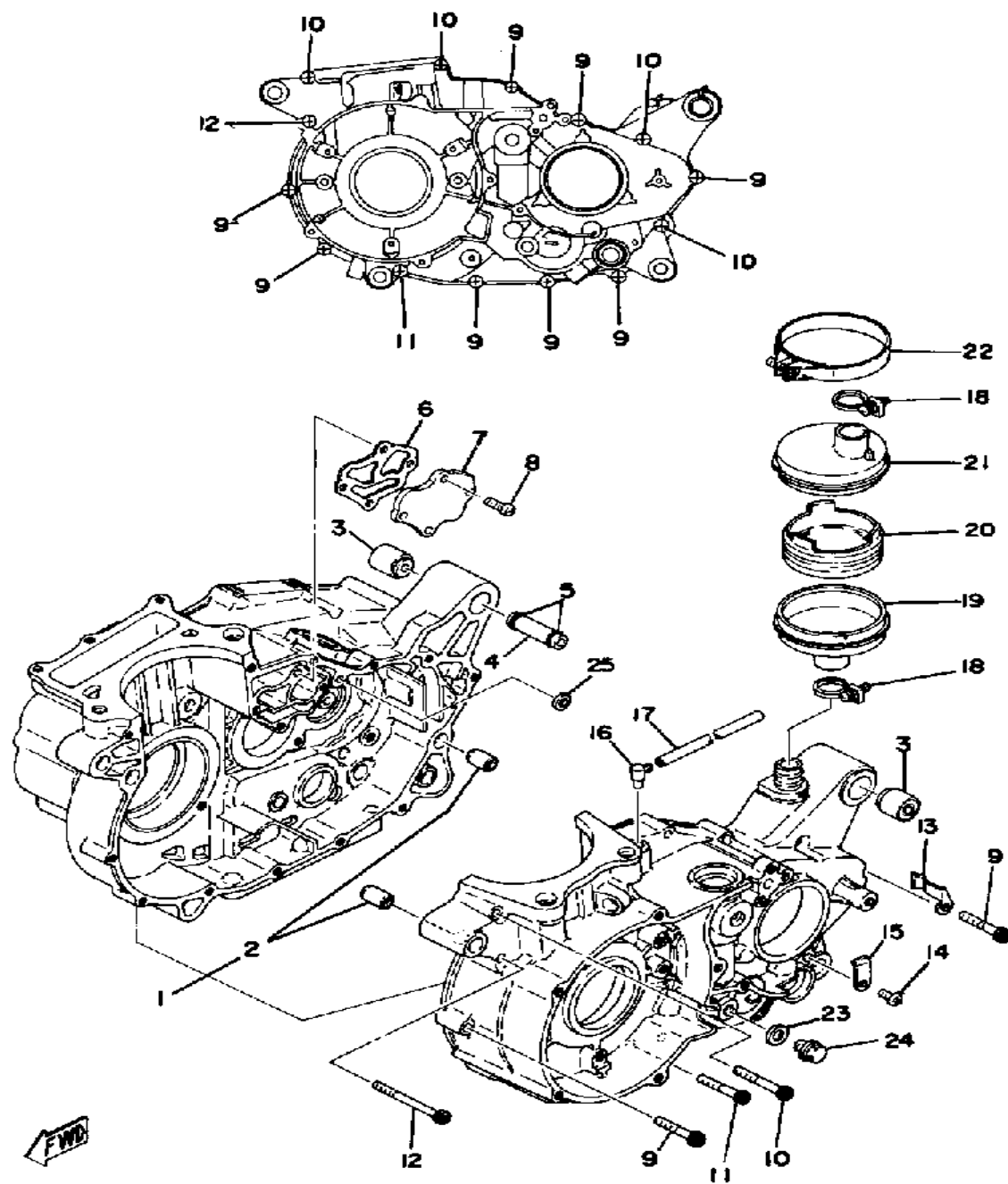
CONTINUED ON NEXT FRAME ➤



EXHAUST

Ref. No.	Part Number	Description	Qty	Remarks
30	90209-08098-00	WASHER, SPEC''L SHAP 2	
31	91316-08050-00	BOLT 1	
32	91316-08050-00	BOLT 1	
33	(1E6-14786-01-00)	ARRESTER, SPARK 1	SKYWAY
34	3WX-14766-00-00	WASHER, PROTECTOR 2	

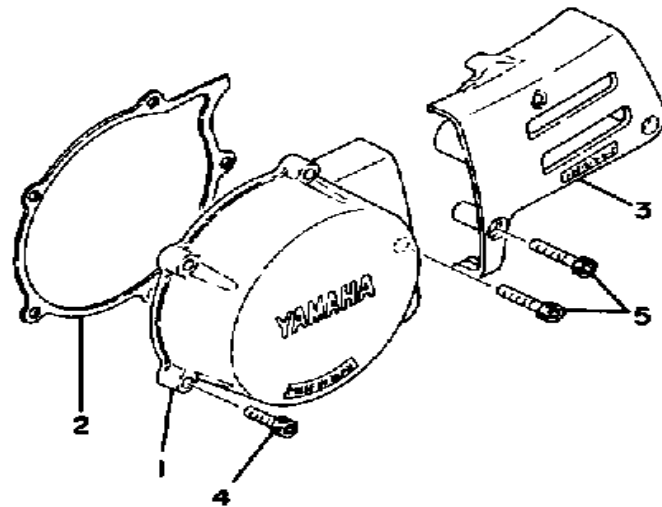
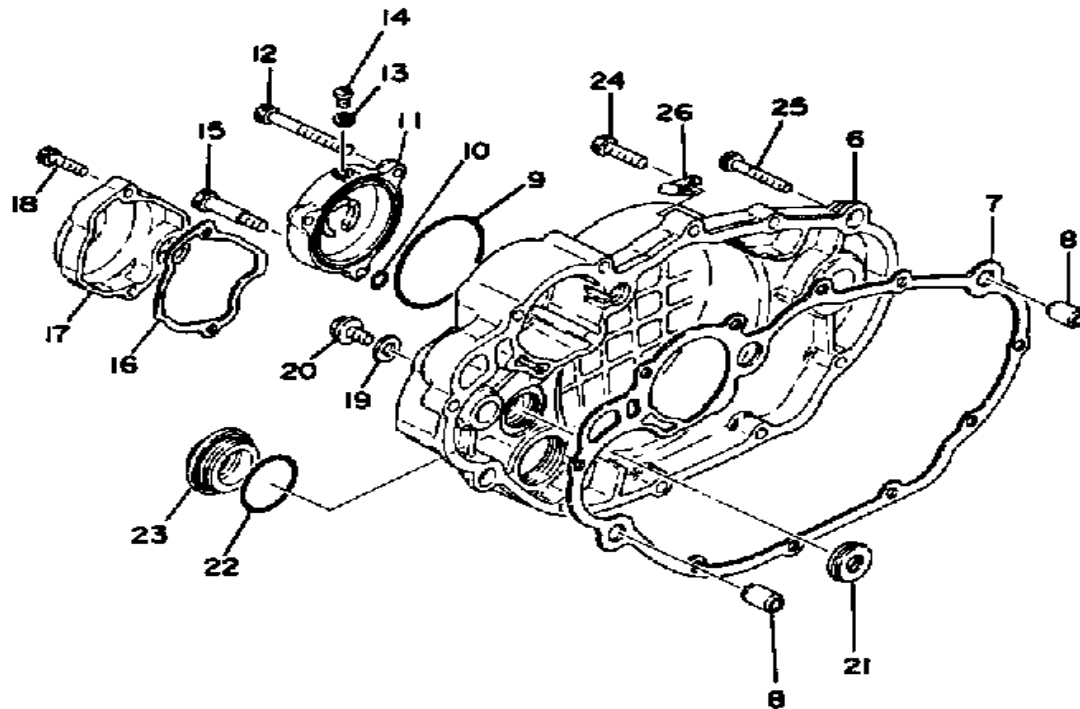
CRANKCASE

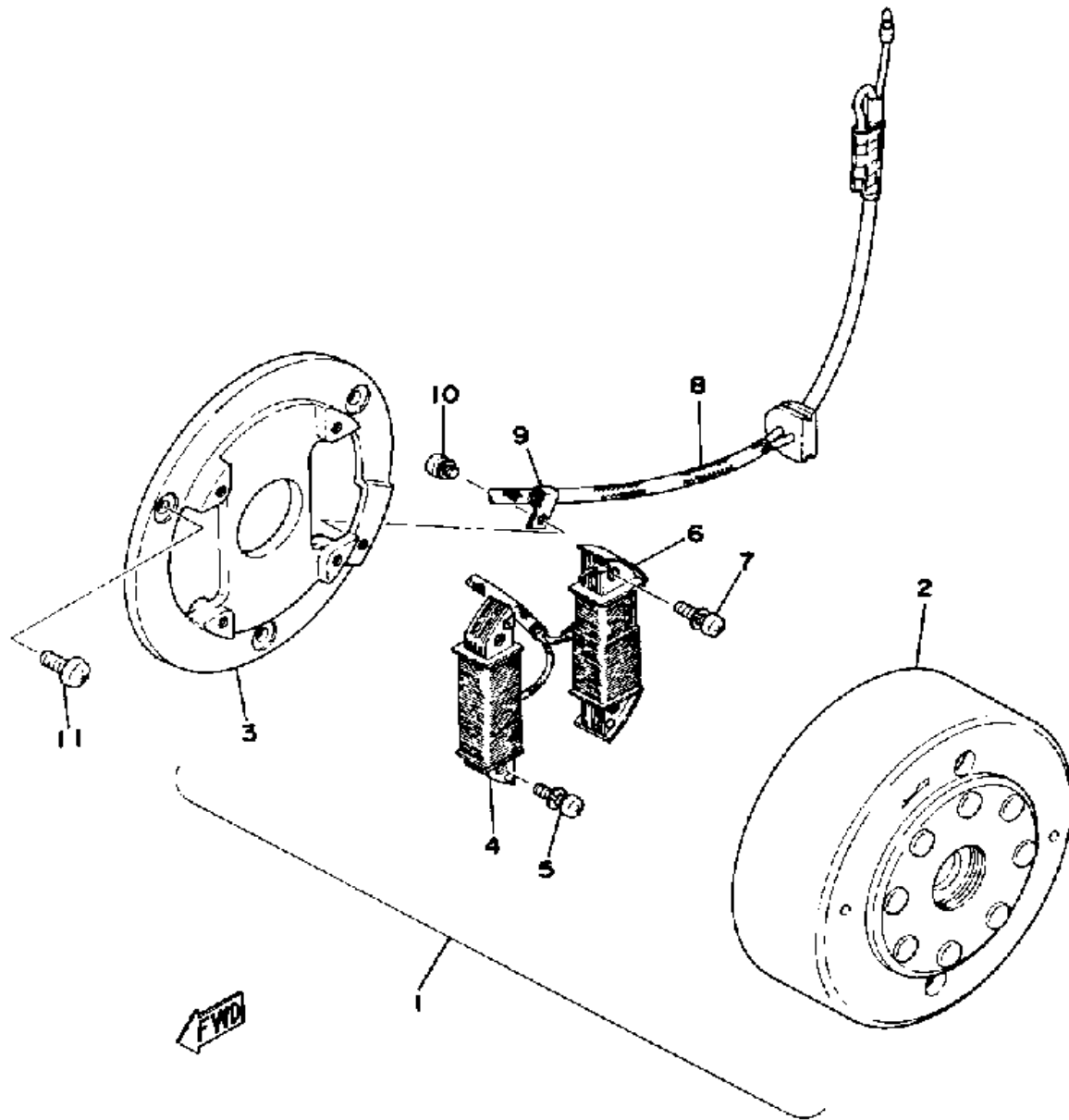


Ref. No.	Part Number	Description	Qty	Remarks
1	583-15100-03-00	CRANKCASE ASSEMBLY (583-15100-00)	1	
2	99510-12016-00	. PIN, DOWEL	2	
3	583-15316-00-00	DAMPER, ENG MOUNT 1	2	
4	583-15317-01-00	SPACER, ENG MOUNT	1	
5	93210-11313-00	O-RING	2	
6	583-15466-00-00	GASKET 2	1	
7	583-15426-00-00	COVER, OIL PUMP R	1	
8	98580-06018-00	SCREW, PAN HEAD	4	
9	91316-06035-00	BOLT	8	
10	91316-06045-00	BOLT, SOCKET HEAD	4	
11	91316-06055-00	BOLT, SOCKET HEAD	1	
12	91316-06065-00	BOLT, SOCKET HEAD	1	
13	90465-08277-00	CLAMP	1	
14	98580-06012-00	SCREW, PAN HEAD	1	
15	(90465-05075-00)	CLAMP	1	
16	583-15371-00-00	BREATHER	1	
17	90445-07039-00	HOSE	1	
18	90460-22083-00	CLAMP, HOSE	2	
19	583-15347-00-00	BREATHER 2	1	
20	583-15358-00-00	SEPARATOR, OIL	1	
21	583-15346-00-00	BREATHER 1	1	
22	90460-71129-00	CLAMP, HOSE (90460-71017)	1	
23	90430-10031-00	GASKET	1	
24	90340-10003-00	PLUG, STRAIGHT SCRW	1	
25	90430-09121-00	GASKET	1	

CRANKCASE COVER

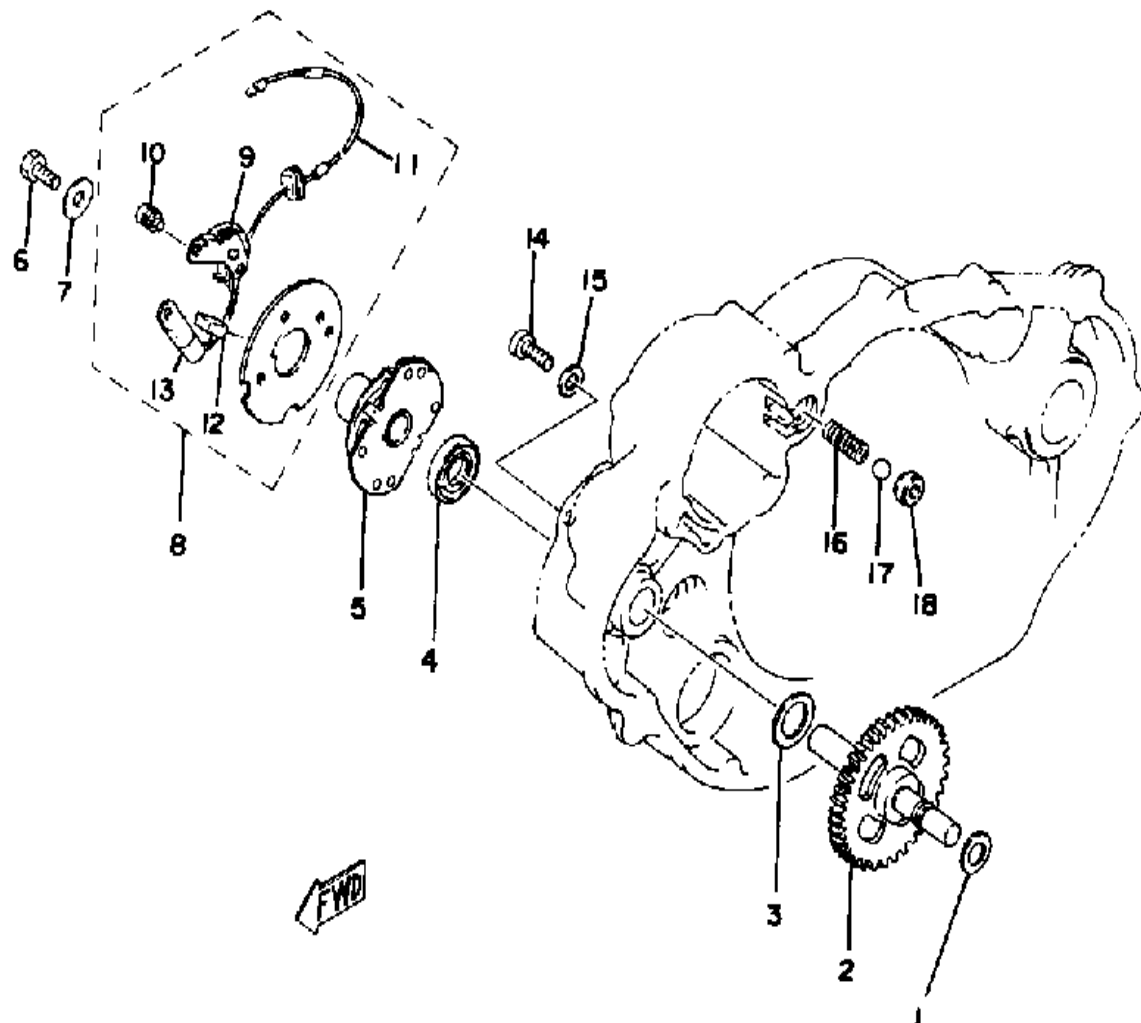
Ref. No.	Part Number	Description	Qty	Remarks
1	583-15411-00-00	COVER, CRANKCASE L	1	
2	3HT-15451-00-00	GASKET, CRCS COVER	1	
3	583-15421-00-00	COVER, CRANKCASE R	1	
4	91316-06025-00	BOLT	4	
5	91316-06035-00	BOLT	4	
6	583-W1542-00-00	COVER, CRANKCASE 3 (583-15431-02-98)	1	
7	3HT-15462-00-00	GASKET, CRCS CVR 3	1	
8	99510-12016-00	PIN, DOWEL	2	
9	93210-64297-00	O-RING	1	
10	93210-07438-00	O-RING	1	
11	583-13447-01-00	COVER, OIL ELEMENT	1	
12	91316-06060-00	BOLT	2	
13	90430-05126-00	GASKET	1	
14	90149-05110-00	SCREW	1	
15	90109-06419-00	BOLT	1	
16	583-15457-00-00	GASKET	1	
17	583-15417-00-00	COVER, CAP	1	
18	91316-06025-00	BOLT	2	
19	90430-10171-00	GASKET	1	
20	90340-10003-00	PLUG, STRAIGHT SCRW	1	
21	93101-14089-00	OIL SEAL	1	
22	93210-34474-00	O-RING	1	
23	583-15425-00-00	COVER, GENERATOR R	1	
24	90110-06138-00	BOLT, HEX SKT HEAD	8	
25	91316-06040-00	BOLT, SOCKET HEAD	2	
26	90465-08076-00	CLAMP	1	





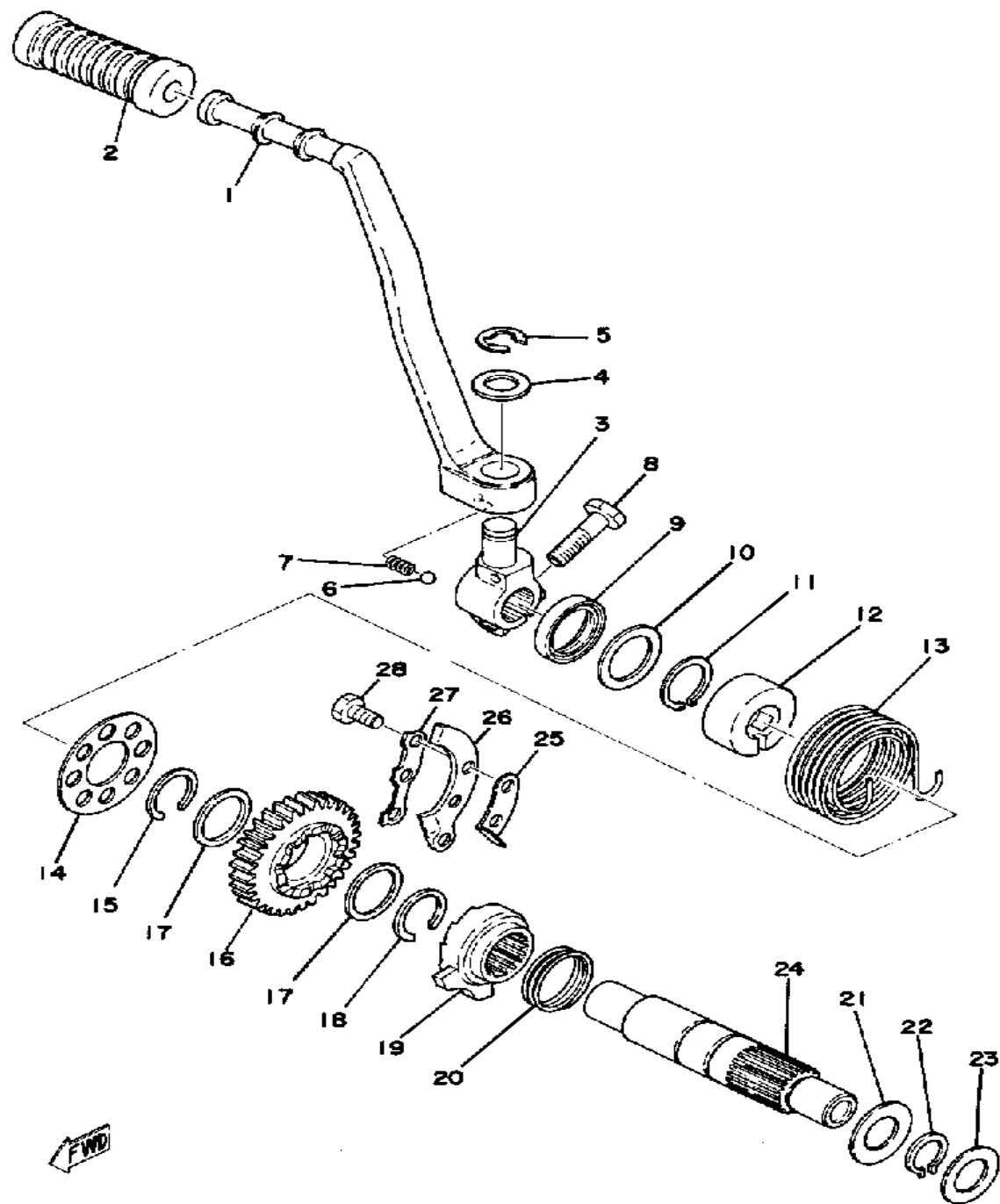
MAGNETO

Ref. No.	Part Number	Description	Qty	Remarks
1	583-81300-50-00	FLYWHL MAGNETO ASSEMBLY	1	
2	(583-81350-50-00)	ROTOR ASSEMBLY	1	
3	(583-81309-50-00)	BASE, MAGNETO	1	
4	583-81311-50-00	. COIL, IGNITION 1	1	
5	583-81345-50-00	. SCREW, PAN HEAD (5.22) ...	2	
6	583-81313-50-00	. COIL, LIGHTING 1	1	
7	583-81345-50-00	. SCREW, PAN HEAD (5.22) ...	2	
8	(583-81315-50-00)	LEAD WIRE ASSEMBLY	1	
9	(583-81328-50-00)	CLAMP	1	
10	(583-81346-50-00)	SCREW, PAN HEAD	1	
11	98503-06014-00	SCREW, PAN HEAD (92502-06016)	3	



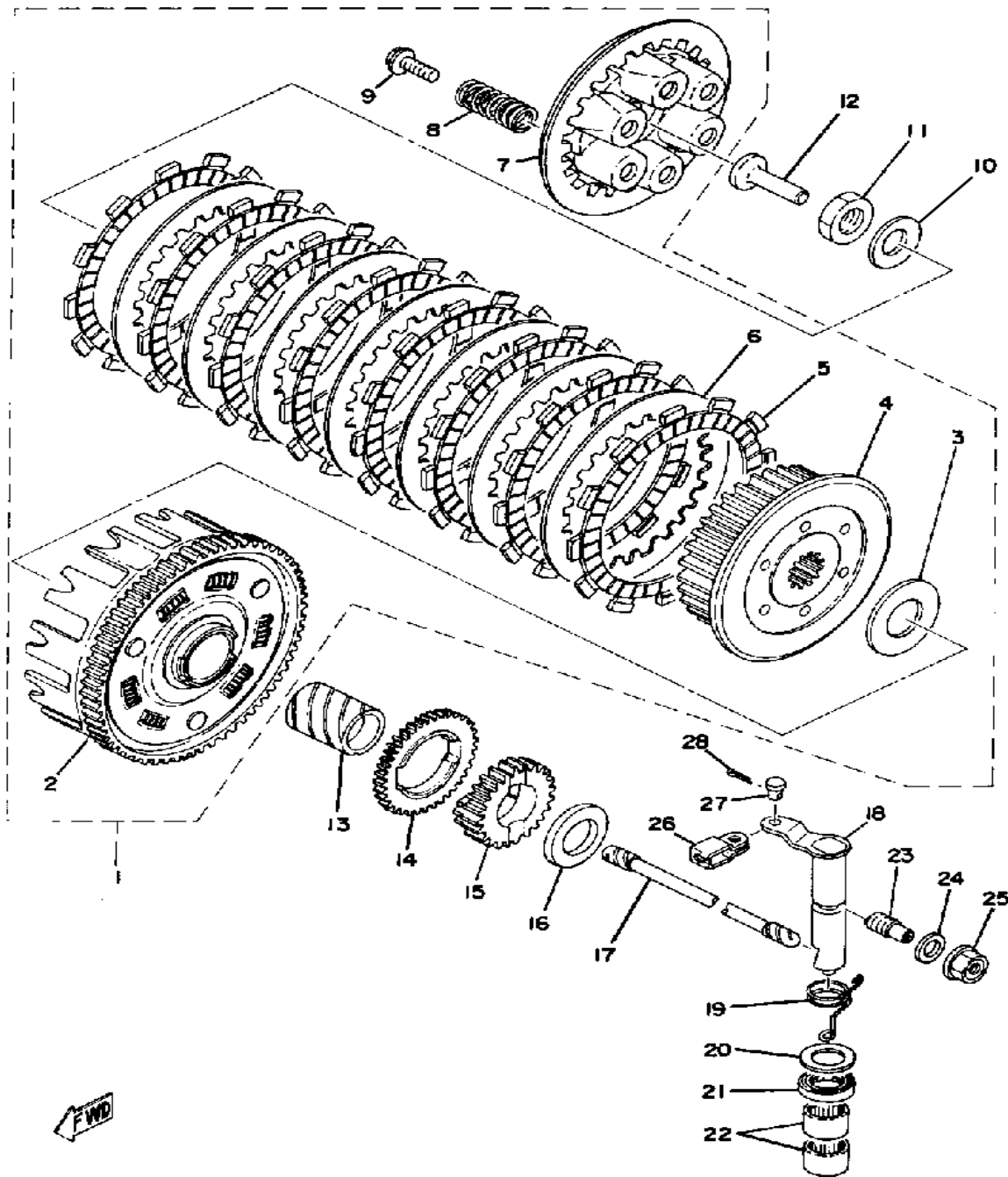
GOVERNOR

Ref. No.	Part Number	Description	Qty	Remarks
1	90201-09572-00	WASHER, PLATE	1	
2	583-11150-00-00	BREAKER SHAFT ASSEMBLY	1	
3	90201-15234-00	WASHER, PLATE	1	
4	93102-15147-00	OIL SEAL, SD-TYPE (SD-15-26-5)	1	
5	583-81653-50-00	GOVERNOR ASSEMBLY	1	
6	97313-06016-00	BOLT, HEXAGON	1	
7	90201-065F3-00	WASHER, PLATE	1	
8	583-81620-50-00	BREAKER PLATE ASSEMBLY	1	
9	583-81621-50-00	. CONTACT BRKR ASSEMBLY	1	
10	98580-04006-00	. SCREW, PAN HEAD	3	
11	583-81615-50-00	. WIRE, LEAD	1	
12	1L9-81631-50-00	. LUBRICATOR	1	
13	583-81625-50-00	. CONDENSER 1	1	
14	98503-06014-00	SCREW, PAN HEAD (92502-06016)	2	
15	92990-06200-00	WASHER	2	
16	90501-05378-00	SPRING, COMPRESSION	1	
17	93503-08007-00	BALL	1	
18	583-13113-00-00	SEAT, CHECK BALL	1	



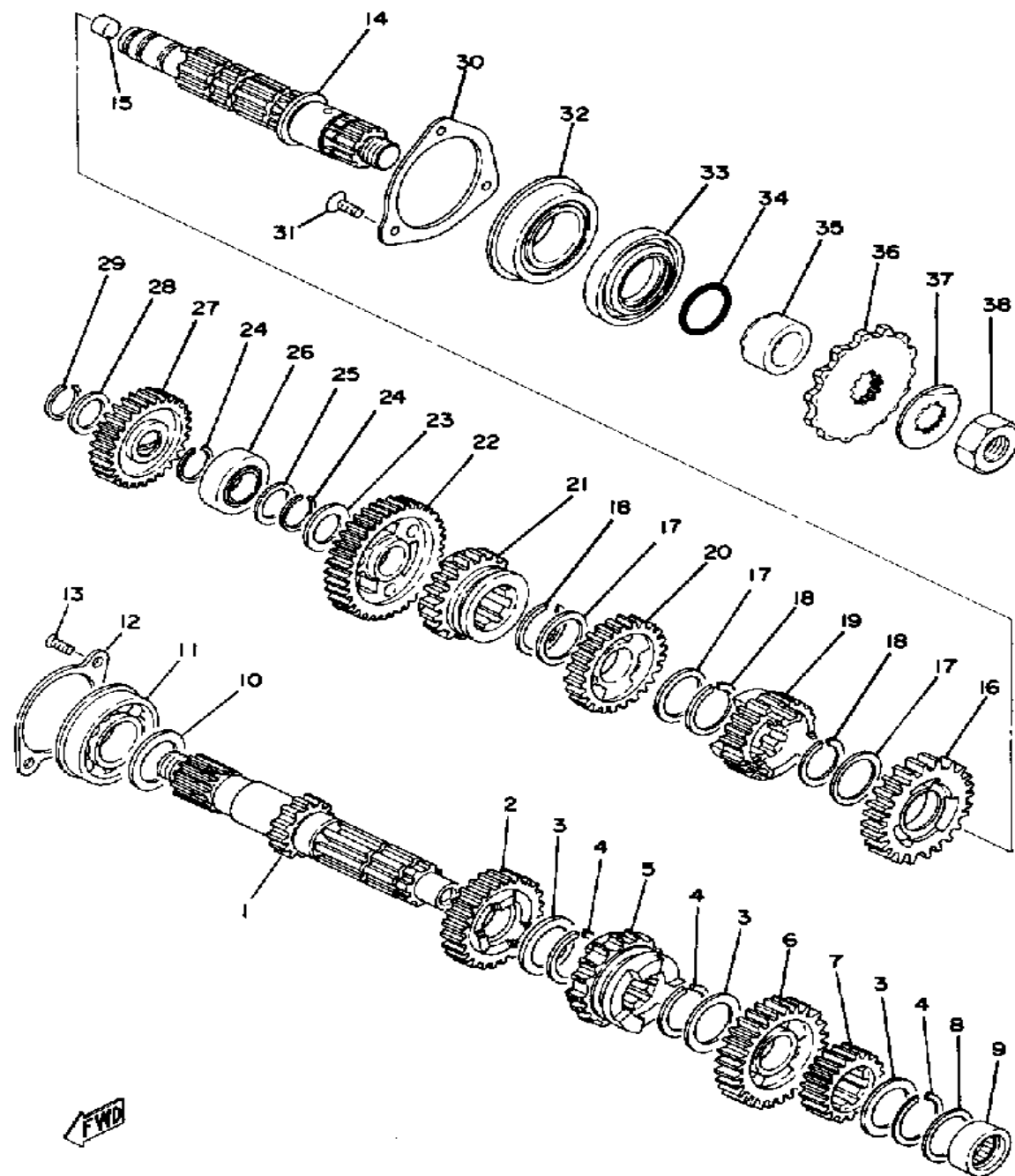
STARTER

Ref. No.	Part Number	Description	Qty	Remarks
1	1JN-15610-00-00	KICK CRANK ASSEMBLY	1	
2	1T1-15618-00-00	COVER, KICK LEVER	1	
3	583-15621-00-00	BOSS, KICK CRANK	1	
4	90201-15234-00	WASHER, PLATE	1	
5	99006-10600-00	CIRCLIP	1	
6	93507-32031-00	BALL	1	
7	90501-12081-00	SPRING, COMPRESSION	1	
8	97313-08030-00	BOLT, HEXAGON	1	
9	93102-25064-00	OIL SEAL	1	
10	90201-256K6-00	WASHER, PLATE (0.9T)	1	
11	93410-25010-00	CIRCLIP, S-TYPE	1	
12	(90560-25154-00)	SPACER	1	
13	90508-32280-00	SPRING, TORSION	1	
14	(583-15676-00-00)	COVER, SPRING	1	
15	93440-25084-00	CIRCLIP	1	
16	583-15641-00-00	GEAR, KICK	1	
17	90201-253K0-00	WASHER, PLATE (T=1.0)	2	
18	93440-25020-00	CIRCLIP	1	
19	583-15671-00-00	WHEEL, RATCHET	1	
20	90501-23143-00	SPRING, COMPRESSION (363-15675-00)	1	
21	363-15676-00-00	COVER, SPRING	1	
22	99009-19400-00	CIRCLIP	1	
23	90201-20278-00	WASHER, PLATE	1	
24	583-15661-00-00	AXLE, KICK	1	
25	434-15668-00-00	STOPPER	1	
26	583-15674-00-00	GUIDE, RATCHET WHL	1	
27	363-15686-00-00	WASHER, LOCK	1	
28	97011-06016-00	BOLT	3	



CLUTCH

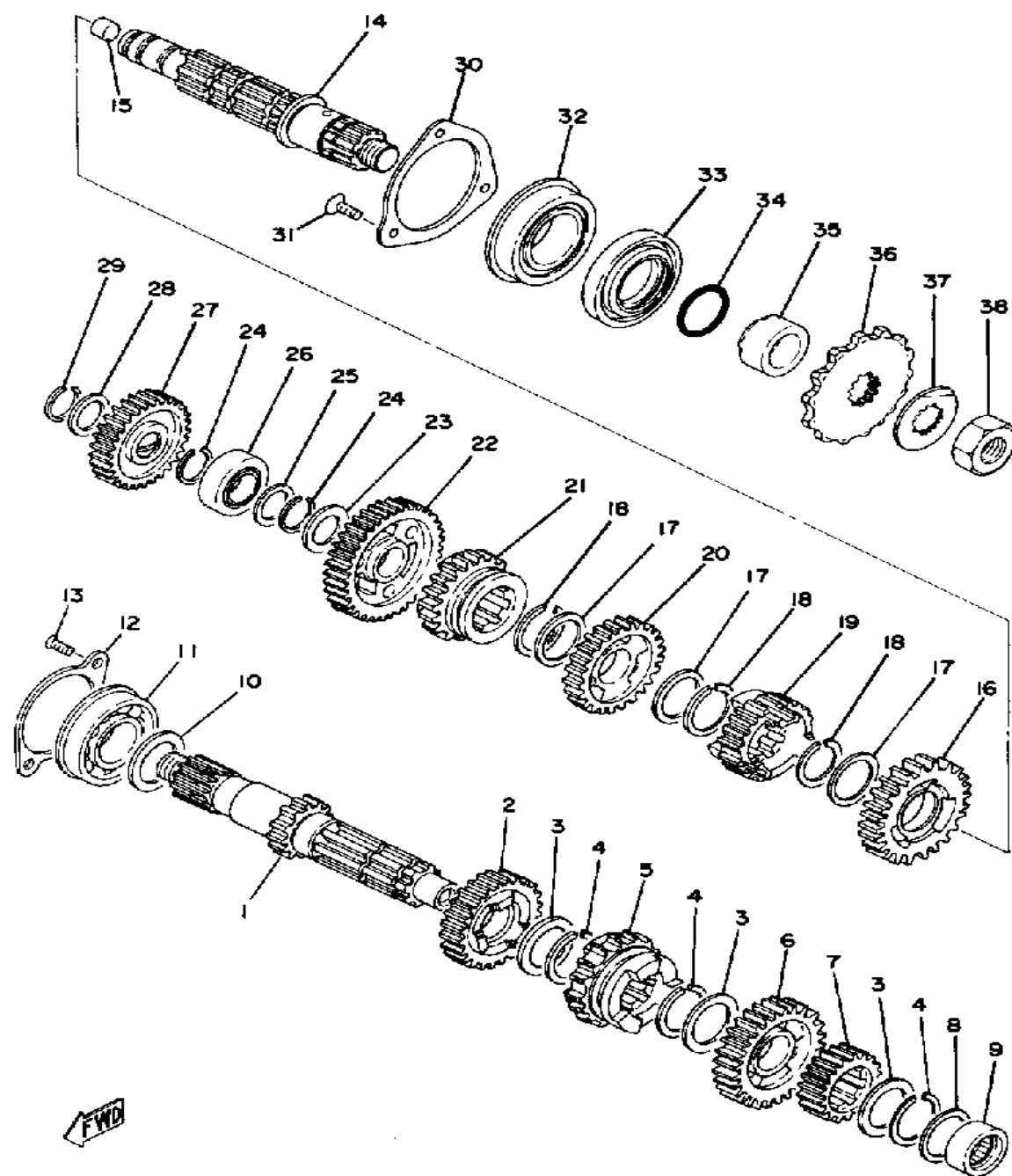
Ref. No.	Part Number	Description	Qty	Remarks
1	(583-16301-00-00)	CLUTCH ASSEMBLY	1	
2	583-16150-00-00	. PRI DRVN GEAR	1	
3	170-16164-00-00	. PLATE, THRUST 2	1	
4	583-16371-00-00	. BOSS, CLUTCH	1	
5	5Y1-16321-00-00	. PLATE, FRICTION	8	
6	360-16325-00-00	. PLATE, CLUTCH 2	7	
7	498-16351-00-00	. PLATE, PRESSURE 1	1	
8	90501-23391-00	. SPRING, COMPRESSION	6	
9	90159-06010-00	. SCREW, WITH WASHER	6	
10	214-16119-00-00	SPRING, BELLEVILLE	1	
11	90170-18086-00	NUT, HEXAGON	1	
12	174-16356-00-00	ROD, PUSH 1	1	
13	90560-25153-00	SPACER	1	
14	583-13324-00-00	GEAR, PUMP DRIVE	1	
15	583-15631-00-00	GEAR, KICK PINION	1	
16	363-16154-00-00	PLATE, THRUST 1	1	
17	583-16357-01-00	ROD, PUSH 2	1	
18	583-16381-00-00	AXLE, PUSH LEVER	1	
19	90508-12279-00	SPRING, TORSION	1	
20	90201-17327-00	WASHER, PLATE	1	
21	93102-17357-00	OIL SEAL	1	
22	93315-11720-00	BEARING	2	
23	364-16343-00-00	SCREW, ADJUSTING	1	
24	90201-12172-00	WASHER, PLATE	1	
25	583-16344-00-00	NUT, ADJUSTING	1	
26	214-16389-00-00	JOINT	1	
27	90240-06005-00	PIN, CLEVIS	1	
28	91401-10015-00	PIN, COTTER	1	



TRANSMISSION

Ref. No.	Part Number	Description	Qty	Remarks
1	583-17411-01-00	AXLE, MAIN	1	
2	583-17141-00-00	GEAR, 4TH PINION	1	
3	90201-253K0-00	WASHER, PLATE (T=1.0)	3	
4	93440-25020-00	CIRCLIP	3	
5	583-17131-02-00	GEAR, 3RD PINION	1	
6	583-17151-01-00	GEAR, 5TH PINION	1	
7	583-17121-00-00	GEAR, 2ND PINION	1	
8	90201-20266-00	WASHER, PLATE (1.0T)	1	
9	93311-42012-00	BEARING, CYLINDER.# 1	1	
10	168-17428-01-03	SHIM 2 (25-34-0.3)	1	U.R.
	168-17428-01-05	SHIM 2 (25-34-0.5)	1	U.R.
11	93304-20501-00	BEARING	1	
12	583-15383-00-00	PLATE, BRNG COVER	1	
13	98701-06014-00	SCREW, FLAT HEAD	2	
14	99999-01986-00	AXLE, DRIVE	1	
15	90338-09066-00	PLUG, SPEC'L SHAPE	1	
16	583-17221-00-00	GEAR, 2ND WHEEL	1	
17	90201-253K0-00	WASHER, PLATE (T=1.0)	3	
18	93440-25020-00	CIRCLIP	3	
19	583-17251-01-00	GEAR, 5TH WHEEL	1	
20	583-17231-01-00	GEAR, 3RD WHEEL	1	
21	583-17241-00-00	GEAR, 4TH WHEEL	1	
22	583-17211-00-00	GEAR, 1ST WHEEL	1	
23	90201-20278-00	WASHER, PLATE	1	
24	93410-20038-00	CIRCLIP	2	
25	90201-20266-00	WASHER, PLATE (1.0T)	1	
26	93313-32008-00	BEARING, CYLINDER.# 3	1	
27	583-15651-00-00	GEAR, KICK IDLE	1	
28	90201-17255-00	WASHER, PLATE	1	

CONTINUED ON NEXT FRAME ➤

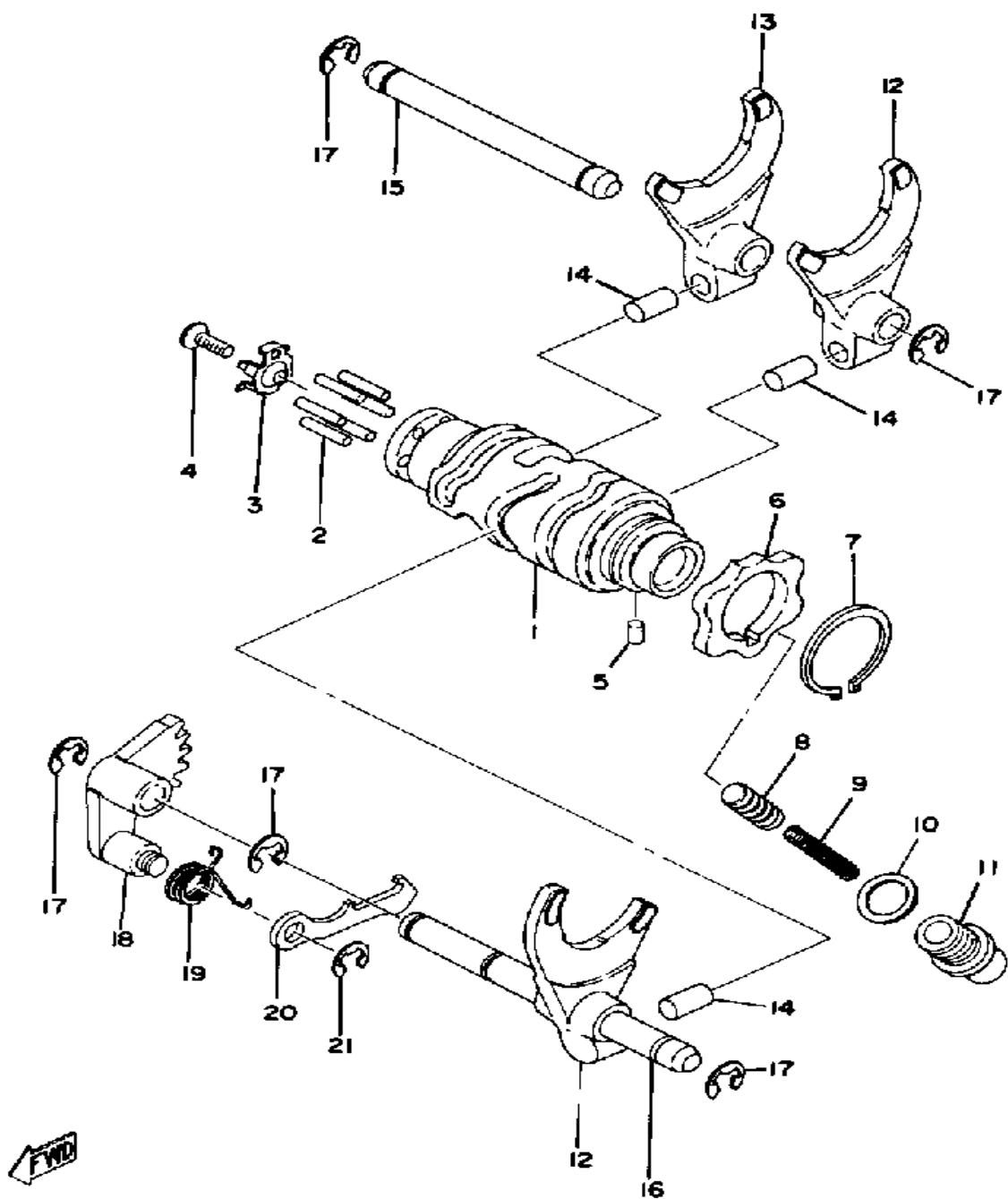


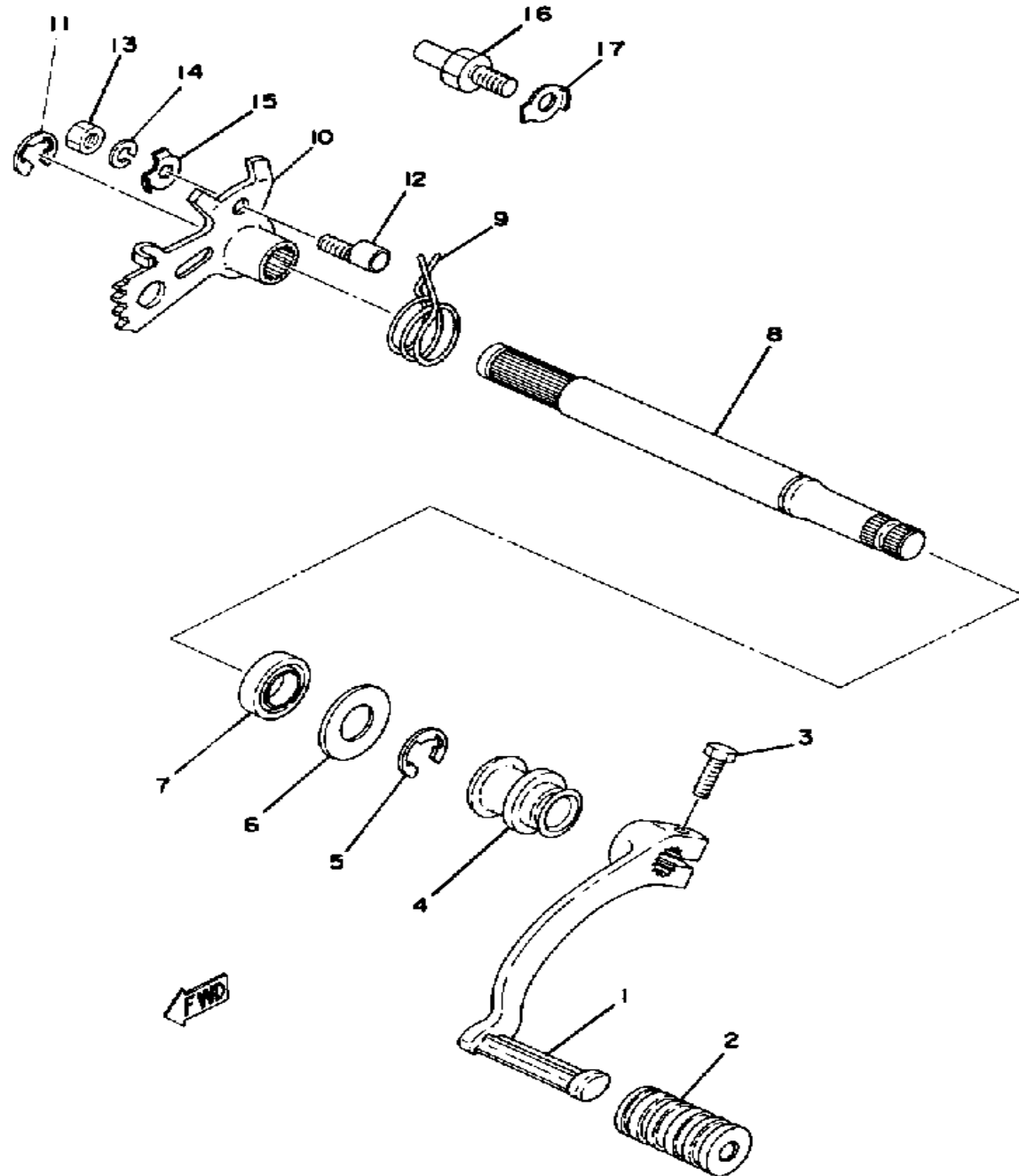
TRANSMISSION

Ref. No.	Part Number	Description	Qty	Remarks
29	99009-17400-00	CIRCLIP	1	
30	(363-15381-00-00)	PLATE, BRNG COVER	1	
31	98701-05012-00	SCREW, FLAT HEAD	1	
32	93306-30517-00	BEARING	1	
33	93102-35180-00	OIL SEAL, SD-TYPE	1	
34	93210-22298-00	O-RING	1	
35	90387-25507-00	COLLAR	1	
36	9383E-14145-00	SPROCKET, DRIVE (14T)	1	U.R.
	9383E-15082-00	SPROCKET, DRIVE (15T)	1	U.R.
	9383E-16106-00	SPROCKET, DRIVE 16T (16T) .	1	U.R.
37	90215-21022-00	WASHER, LOCK	1	
38	90179-18020-00	NUT	1	

SHIFT CAM - FORK

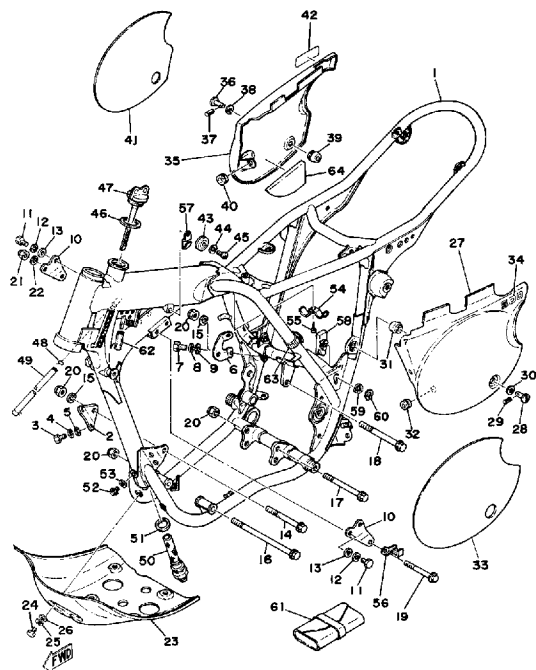
Ref. No.	Part Number	Description	Qty	Remarks
1	434-18540-03-00	SHIFT CAM ASSEMBLY (434-18541-03)	1	
2	93604-18100-00	PIN, DOWEL	6	
3	434-18561-00-00	PLATE, SIDE 1	1	
4	98701-05012-00	SCREW, FLAT HEAD	1	
5	93604-08071-00	PIN, DOWEL	1	
6	360-18141-01-00	PLATE, STOPPER	1	
7	99009-30400-00	CIRCLIP	1	
8	278-18547-02-00	STOPPER, CAM	1	
9	90501-10062-00	SPRING, COMPRESSION	1	
10	137-15353-00-00	GASKET, DRAIN	1	
11	90149-14031-00	SCREW, SPEC'L SHAPE	1	
12	364-18511-00-00	FORK, SHIFT 1	2	
13	363-18511-00-00	FORK, SHIFT 1	1	
14	90250-08017-00	PIN, STRAIGHT	3	
15	363-18535-00-00	BAR, SHIF FRK GDE 2	1	
16	(363-18531-00-00)	BAR, SHIF FRK GDE 1	1	
17	99001-08600-00	CIRCLIP	5	
18	434-18122-00-00	LEVER, SHIFT 2	1	
19	90508-08008-00	SPRING, TORSION (363-18123-00)	1	
20	498-18151-03-00	LEVER, SHIFT 3	1	
21	99080-07600-00	CIRCLIP (E)	1	





SHIFT SHAFT

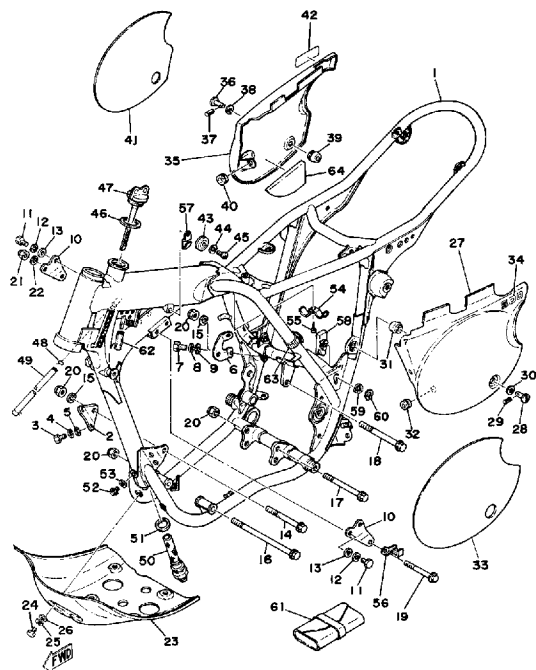
Ref. No.	Part Number	Description	Qty	Remarks
1	3UL-18111-00-00	PEDAL, SHIFT	1	
2	132-18113-01-00	COVER, SHIFT PEDAL	1	
3	97011-06020-00	BOLT	1	
4	583-18131-00-00	BOOT, SEALING	1	
5	99001-12600-00	CIRCLIP	1	
6	90201-14220-00	WASHER, PLATE	1	
7	93109-14010-00	OIL SEAL, SDO-TYPE	1	
8	583-18125-00-00	SHAFT, SHIFT	1	
9	90508-32052-00	SPRING, TORSION (214-18124-00)	1	
10	434-18121-00-00	LEVER, SHIFT 1	1	
11	99006-10600-00	CIRCLIP	1	
12	90149-06017-00	SCREW, SPEC'L SHAPE (214-18186-00)	1	
13	95380-06600-00	NUT	1	
14	92995-06100-00	WASHER, SPRING	1	
15	90215-06016-00	WASHER, LOCK	1	
16	278-18127-00-00	STOPPER, SCREW	1	
17	90215-08115-00	WASHER, LOCK	1	



FRAME - SIDE COVER

Ref. No.	Part Number	Description	Qty	Remarks
1	(1T1-21110-00-33)	FRAME	1	YAMAHA BLACK
2	583-21316-00-00	STAY, ENGINE 3	1	
3	97013-08025-00	BOLT	2	
4	92990-08100-00	WASHER	2	
5	92901-08600-00	WASHER	2	
6	1T1-21317-00-00	STAY, ENGINE 4	1	
7	97013-08025-00	BOLT	2	
8	92990-08100-00	WASHER	2	
9	92901-08600-00	WASHER	2	
10	583-21315-01-00	STAY, ENGINE 2 (583-21315-00)	2	
11	97313-08018-00	BOLT, HEXAGON (97301-08016)	4	
12	92990-08100-00	WASHER	4	
13	92901-08600-00	WASHER	4	
14	90105-10039-00	BOLT, WASHER BASED	1	
15	90201-102G9-00	WASHER, PLATE	2	
16	90105-10063-00	BOLT, WASHER BASED	1	
17	90105-10050-00	BOLT, WASHER BASED	1	
18	90105-10051-00	BOLT, WASHER BASED	1	
19	90105-08064-00	BOLT, WASHER BASED	1	
20	90185-10060-00	NUT, SELF-LOCKING	4	
21	90185-08089-00	NUT, SELF-LOCKING	1	
22	90208-08011-00	WASHER, CONICAL SPRING ..	1	
23	1G1-21471-01-00	UNAVAILABLE IN PRICE BOOK	1	
24	97301-06014-00	BOLT, HEXAGON	6	
25	92995-06100-00	WASHER, SPRING	6	
26	90201-06059-00	WASHER, PLATE	6	
27	1G1-21711-00-00	UNAVAILABLE IN PRICE BOOK	1	EL TORO ORANGE
28	583-21714-00-00	KNOB, SIDE COVER 1	1	
29	91609-25018-00	PIN, SPRING	1	

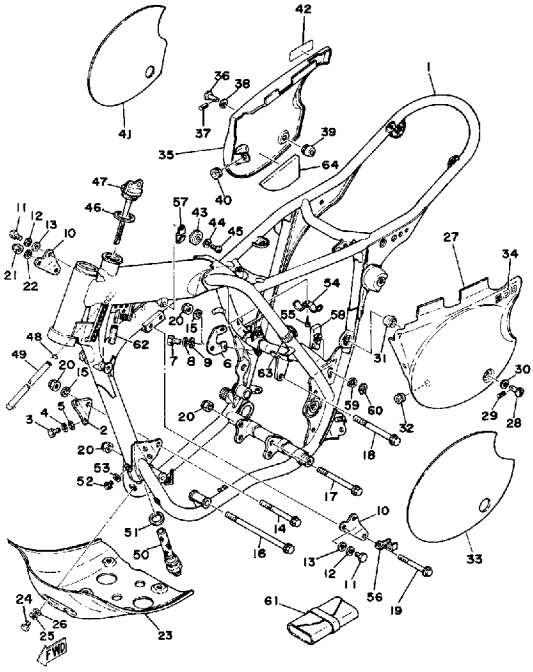
CONTINUED ON NEXT FRAME ➤



FRAME - SIDE COVER

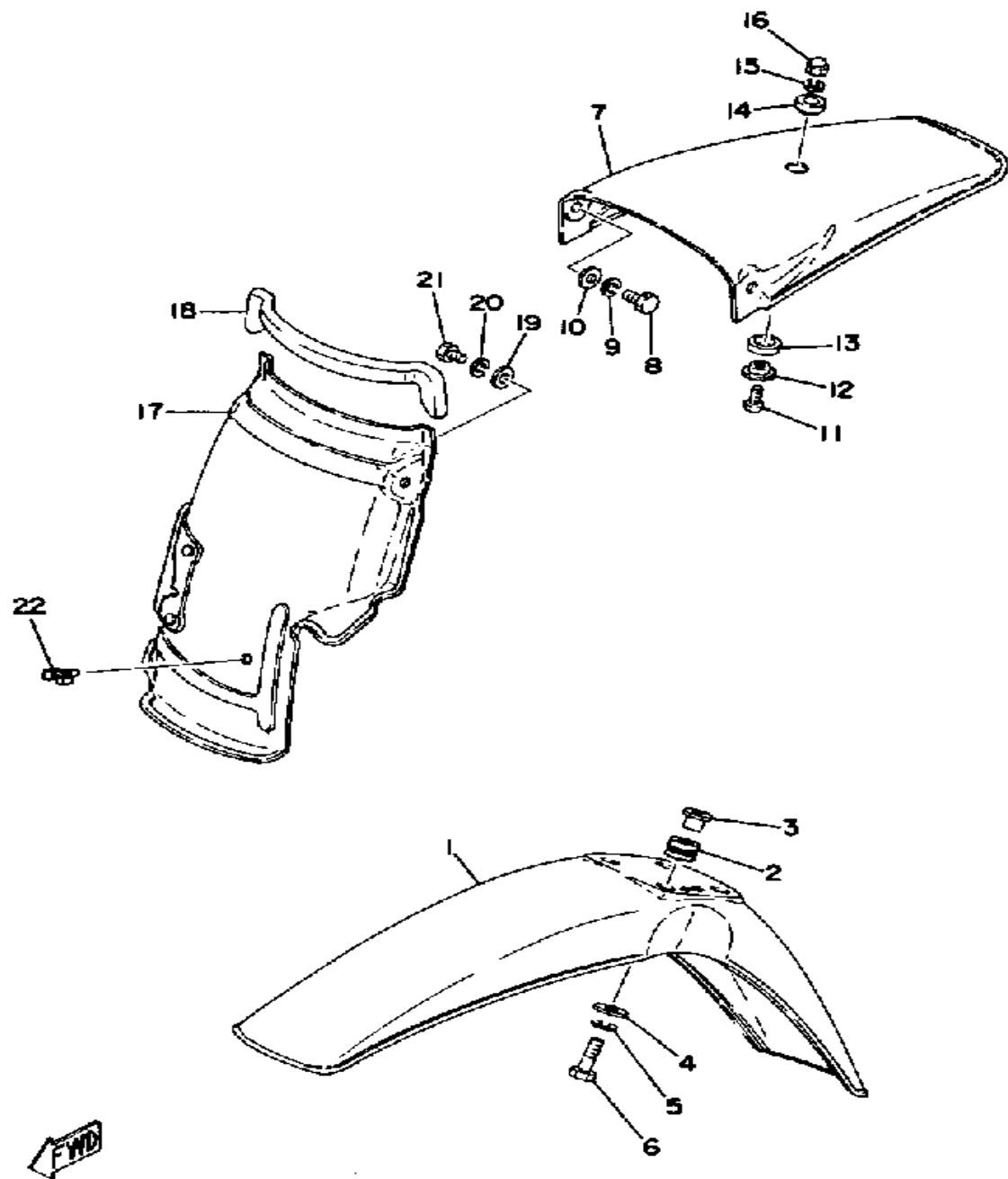
Ref. No.	Part Number	Description	Qty	Remarks
30	90201-06063-00	WASHER, PLATE	1	
31	583-21747-00-00	DAMPER	1	
32	90480-01176-00	GROMMET	1	
33	(583-21786-00-00)	EMBLEM 6	1	
34	(1T1-21784-00-00)	EMBLEM 4	1	
35	1T1-21721-00-00	COVER, SIDE 2	1	EL TORO ORANGE
36	583-21714-00-00	KNOB, SIDE COVER 1	1	
37	91609-25018-00	PIN, SPRING	1	
38	90201-06063-00	WASHER, PLATE	1	
39	583-21747-00-00	DAMPER	1	
40	90480-01176-00	GROMMET	1	
41	(1T1-21787-00-00)	EMBLEM 7	1	
42	(1T1-21784-00-00)	EMBLEM 4	1	
43	583-24181-00-00	DAMPER, LOCATING 1	2	
44	92990-05100-00	WASHER, SPRING	2	
45	98580-05012-00	SCREW, PAN HEAD	2	
46	90430-27124-00	GASKET	1	
47	2J2-21771-02-00	BODY, CAP	1	
48	90467-10008-00	CLIP	2	
49	90445-11289-00	HOSE	1	
50	583-21756-00-00	NET, FILTER	1	
51	90430-22123-00	GASKET	1	
52	90105-08003-00	BOLT, WASHER BASED (834-6777-00)	1	
53	90201-08087-00	WASHER, PLATE	1	
54	(583-21755-00-00)	CLAMP, DAMPER	1	
55	97780-50110-00	SCREW, TAPPING	1	
56	90465-10090-00	CLAMP	1	
57	(90465-06086-00)	CLAMP	1	

CONTINUED ON NEXT FRAME ➤



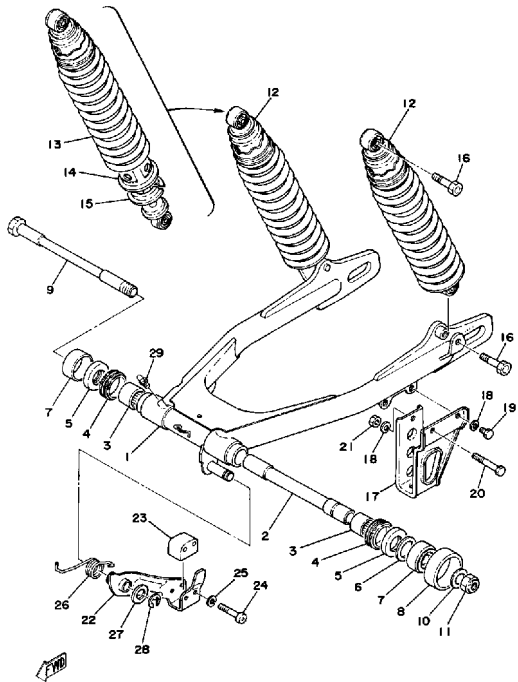
FRAME - SIDE COVER

Ref. No.	Part Number	Description	Qty	Remarks
58	583-22147-01-00	PORTECTOR, CHAIN	1	
59	90206-15023-00	WASHER, WAVE	1	
60	99009-15400-00	CIRCLIP	1	
61	1JN-W2810-00-00	TOOL KIT (1E6-28100-10)	1	
62	(90446-07114-00)	HOSE	1	
63	437-83936-01-00	BAND, SWITCH CORD	1	
64	1G1-2174A-02-00	UNAVAILABLE IN PRICE BOOK	1	



FENDER

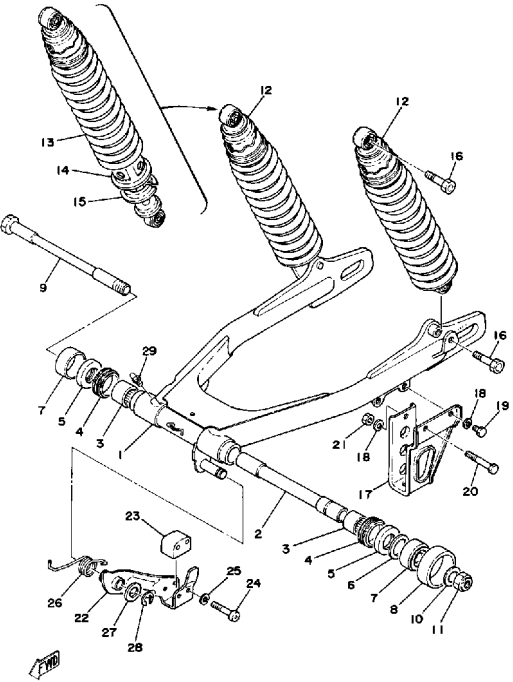
Ref. No.	Part Number	Description	Qty	Remarks
1	(1T1-21511-00-00)	FENDER, FRONT	1	EL TORO ORANGE
2	90480-14198-00	GROMMET	4	
3	90387-06388-00	COLLAR	4	
4	90201-06067-00	WASHER, PLATE	4	
5	92995-06100-00	WASHER, SPRING	4	
6	97021-06030-00	BOLT	4	
7	(1T1-21611-00-00)	FENDER, REAR	1	EL TORO ORANGE
8	97011-06016-00	BOLT	2	
9	92995-06100-00	WASHER, SPRING	2	
10	90201-06571-00	WASHER, PLATE	2	
11	98580-06018-00	SCREW, PAN HEAD	1	
12	90209-06087-00	WASHER, SPEC'L SHAP	1	
13	(322-21639-00-00)	DAMPER 2	1	
14	322-21541-00-00	DAMPER 1	1	
15	92995-06100-00	WASHER, SPRING	1	
16	95303-06800-00	NUT (CROWN)	1	
17	1T1-21620-00-00	GUARD, MUD	1	
18	583-21746-00-00	DAMPER	1	
19	90201-06571-00	WASHER, PLATE	3	
20	92995-06100-00	WASHER, SPRING	3	
21	97011-06016-00	BOLT	3	
22	90464-08020-00	CLAMP	1	



SWING ARM - REAR SHOCKS

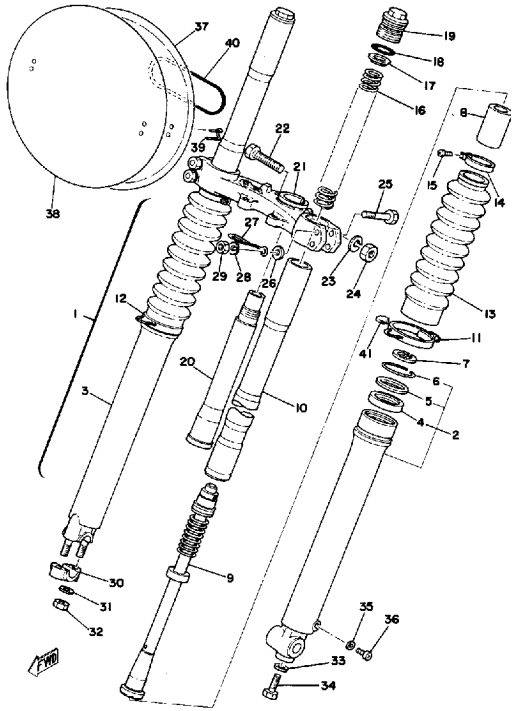
Ref. No.	Part Number	Description	Qty	Remarks
1	(1T1-22110-00-33)	REAR ARM	1	YAMAHA BLACK
2	483-22124-00-00	BUSH 2	1	
3	93317-22208-00	BEARING, CYLINDER.# 7	2	
4	93108-35004-00	OIL SEAL (35-41-8)	2	
5	93342-22205-00	BEARING, FLAT # 2	2	
6	648-45533-00-02	SHIM (90201-22284)	1	
7	2K8-22129-00-00	COVER, THRUST 2	2	
8	431-22151-03-00	SEAL, GUARD	1	
9	583-22141-01-00	SHAFT, PIVOT	1	
10	90208-16019-00	WASHER, CONICAL SPRING ..	2	
11	95601-16100-00	NUT, U	1	
12	3H7-22210-00-00	SHK/ABS ASSEMBLY, REAR ..	2	
13	(1T1-22212-00-00)	SPRING	2	
14	1T1-22211-00-00	. COVER	2	
15	583-22214-00-00	. GUIDE, SPRING 1	2	
16	90109-10420-00	BOLT	4	
17	509-22153-00-33	GUARD, CHAIN	1	YAMAHA BLACK
18	92995-06100-00	WASHER, SPRING	2	
19	97011-06010-00	BOLT	1	
20	97313-06050-00	BOLT	1	
21	95380-06600-00	NUT	1	
22	1T1-22179-02-00	ARM, TENSIONER	1	
23	1T1-22178-01-00	TENSIONER	1	
24	98501-05040-00	SCREW, PAN HEAD (98502-05040)	2	
25	92990-05100-00	WASHER, SPRING	2	
26	90508-32333-00	SPRING, TORSION	1	
27	90201-14411-00	WASHER, PLATE	1	
28	93430-10015-00	CIRCLIP, E-TYPE	1	

CONTINUED ON NEXT FRAME ➤



SWING ARM - REAR SHOCKS

Ref. No.	Part Number	Description	Qty	Remarks
29	93700-06M03-00	NIPPLE, GREASE	1	

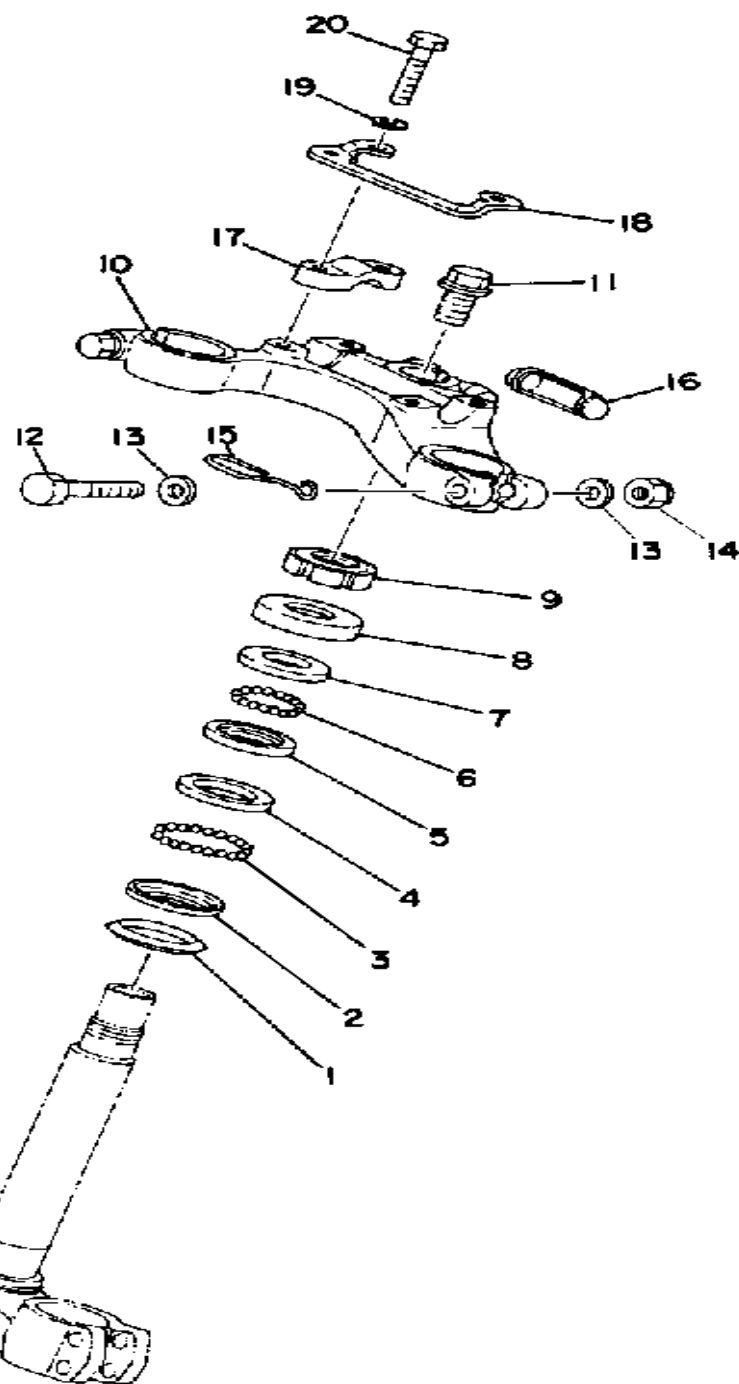


FRONT FORK

Ref. No.	Part Number	Description	Qty	Remarks
1	(1T1-23101-01-00)	FRONT FORK ASSEMBLY	1	
2	(1T2-23126-00-00)	TUBE, OUTER 1	1	
3	(1T2-23136-00-00)	TUBE, OUTER 2	1	
4	48Y-23145-00-00	. . OIL SEAL	2	
5	341-23146-50-00	. . WASHER, OIL SEAL	2	
6	341-23156-50-00	. . CLIP, OIL SEAL	2	
7	(93450-30039-00)	CIRCLIP, INNER	2	
8	(583-23171-00-00)	PISTON, FRONT FORK	2	
9	(1T1-23170-00-00)	CYLINDER, FRTFRK	2	
10	(1T1-23124-00-00)	TUBE, INNER 1	2	
11	(583-23318-00-00)	HOLDER, CABLE 1	1	
12	509-23489-L0-00	. BAND	1	
13	(509-23191-L1-00)	BOOT, FRONT FORK	2	
14	341-92090-60-00	. BAND, BOOT	2	
15	509-23194-L0-00	. SCREW, BOOT BAND	2	
16	(1T1-23141-00-00)	SPRING, FRONT FORK	2	
17	583-23142-00-00	. SEAT, SPRING UPPER	2	
18	240-23114-00-00	. GASKET	2	
19	2W6-23111-00-00	. BOLT, CAP (583-23111-00) . .	2	
	5W6-23111-00-00	. UNAVAILABLE IN PRICE BOOK	2	
20	(1E6-23341-00-00)	SHAFT, STEERING	1	
21	(2H1-23340-00-33)	UNDER BRACKET	1	YAMAHA BLK
22	(322-23356-00-00)	BOLT 2	1	
23	92990-10100-00	. LOCKWASHER	1	
24	(322-23357-00-00)	NUT	1	
25	90101-08340-00	. BOLT	4	
26	92901-08600-00	. WASHER	4	
27	(583-23317-00-00)	HOLDER, CABLE	1	

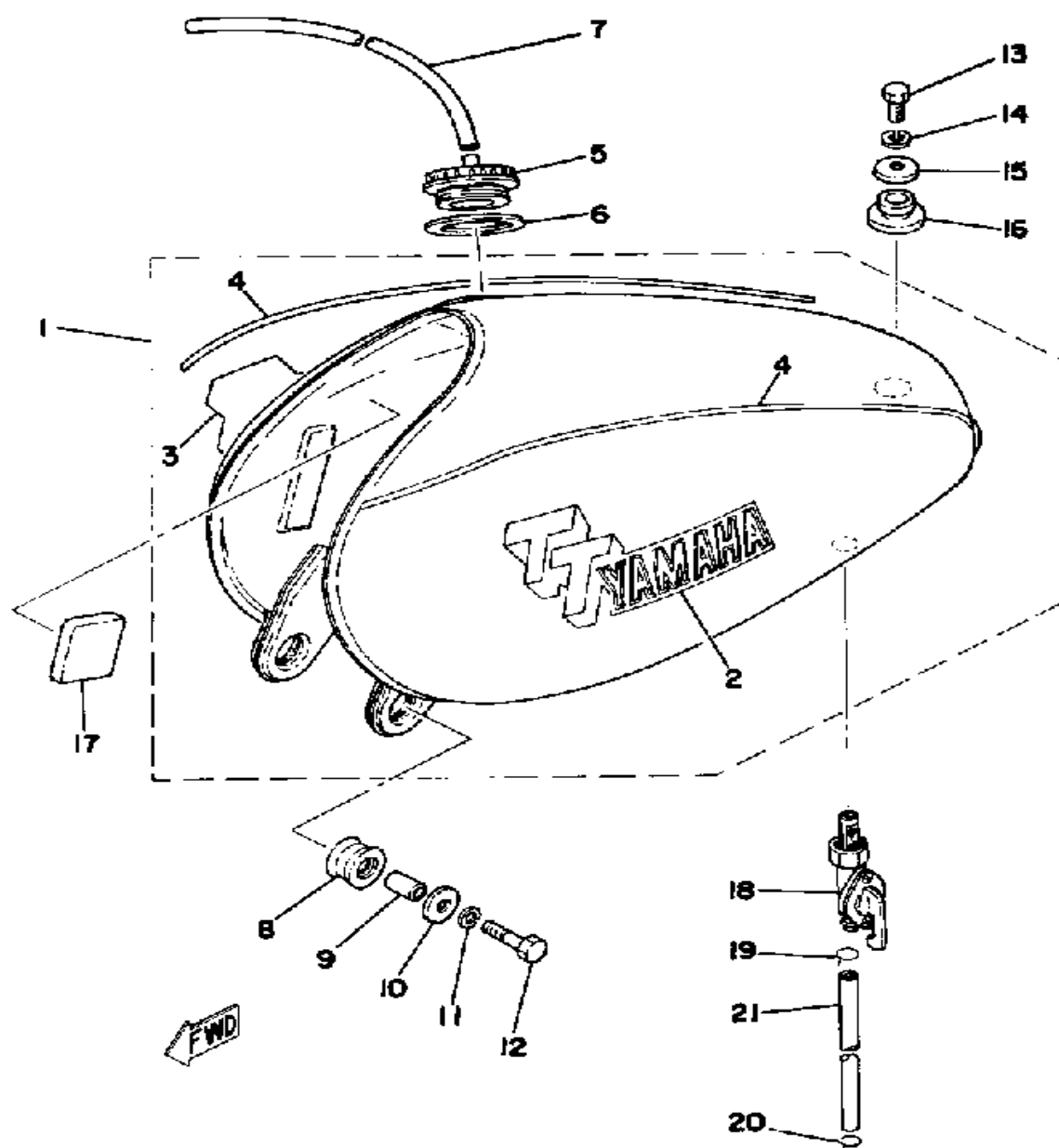
CONTINUED ON NEXT FRAME ➤

FWD



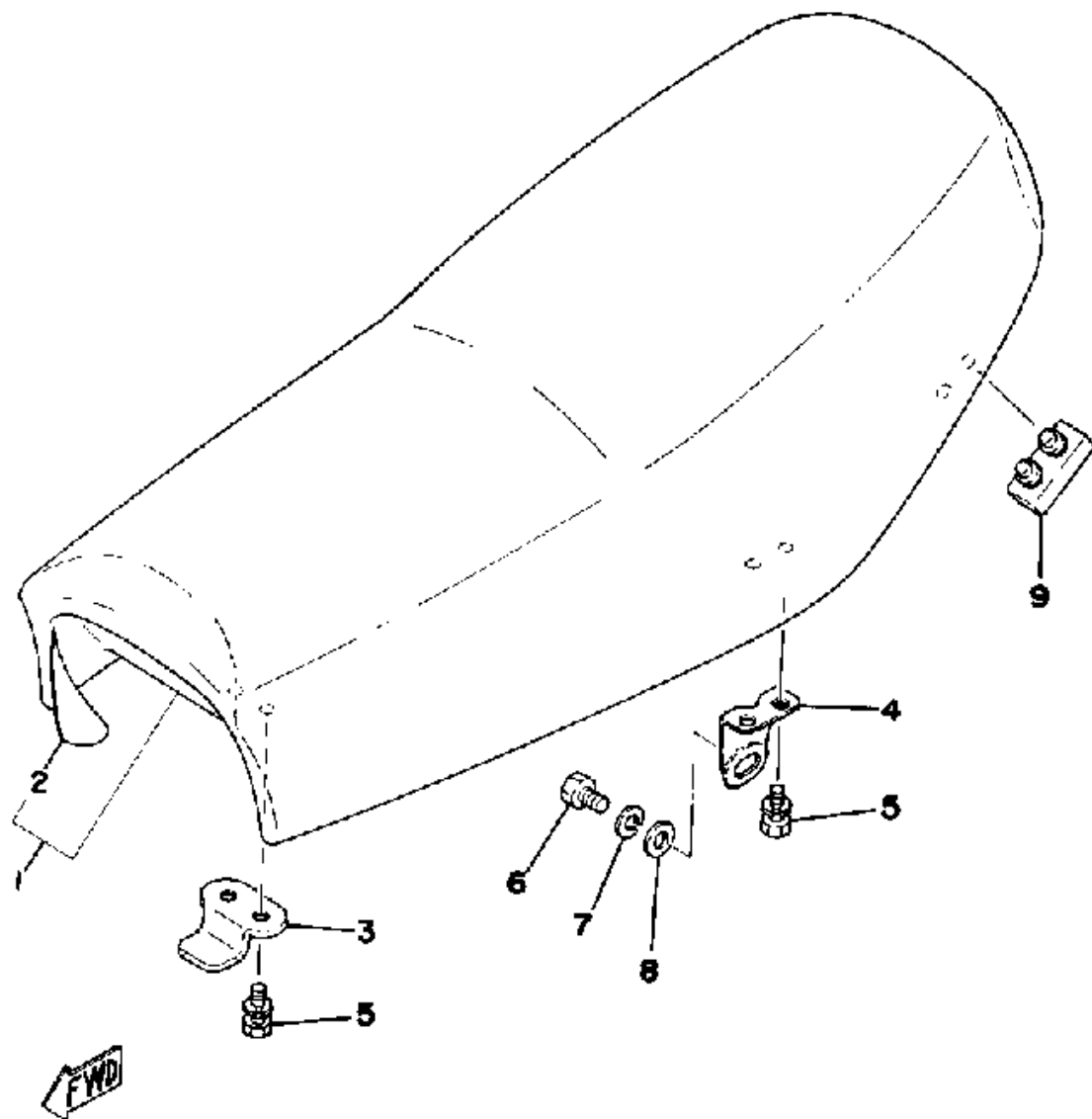
STEERING

Ref. No.	Part Number	Description	Qty	Remarks
1	164-23462-00-00	SEAL, STEERING	1	
2	156-23411-00-00	RACE, BALL 1	1	
3	93501-04011-00	BALL	19	
4	156-23412-00-00	RACE, BALL 2	1	
5	22F-23412-01-00	RACE, BALL 2	1	
6	93503-16010-00	BALL	22	
7	22F-23411-01-00	RACE, BALL 1	1	
8	1T1-23416-00-00	COVER, BALL RACE 2	1	
9	90179-25033-00	NUT	1	
10	(583-23435-01-98)	CROWN, HANDLE	1	LOW GLOSS BLK
11	90105-14136-00	BOLT, WASHER BASED	1	
12	97313-08055-00	BOLT, HEXAGON	3	
13	90201-08083-00	WASHER, PLATE	6	
14	95611-08100-00	NUT, U	3	
15	(583-23317-00-00)	HOLDER, CABLE	1	
16	583-23469-00-00	CAP, BOLT	1	
17	401-23441-00-98	HOLDER, HANDLE UPR	2	LOW GLOSS BLK
18	(583-23389-00-00)	GUIDE, CABLE	1	
19	92990-08100-00	WASHER	4	
20	97313-08035-00	BOLT, HEXAGON	4	



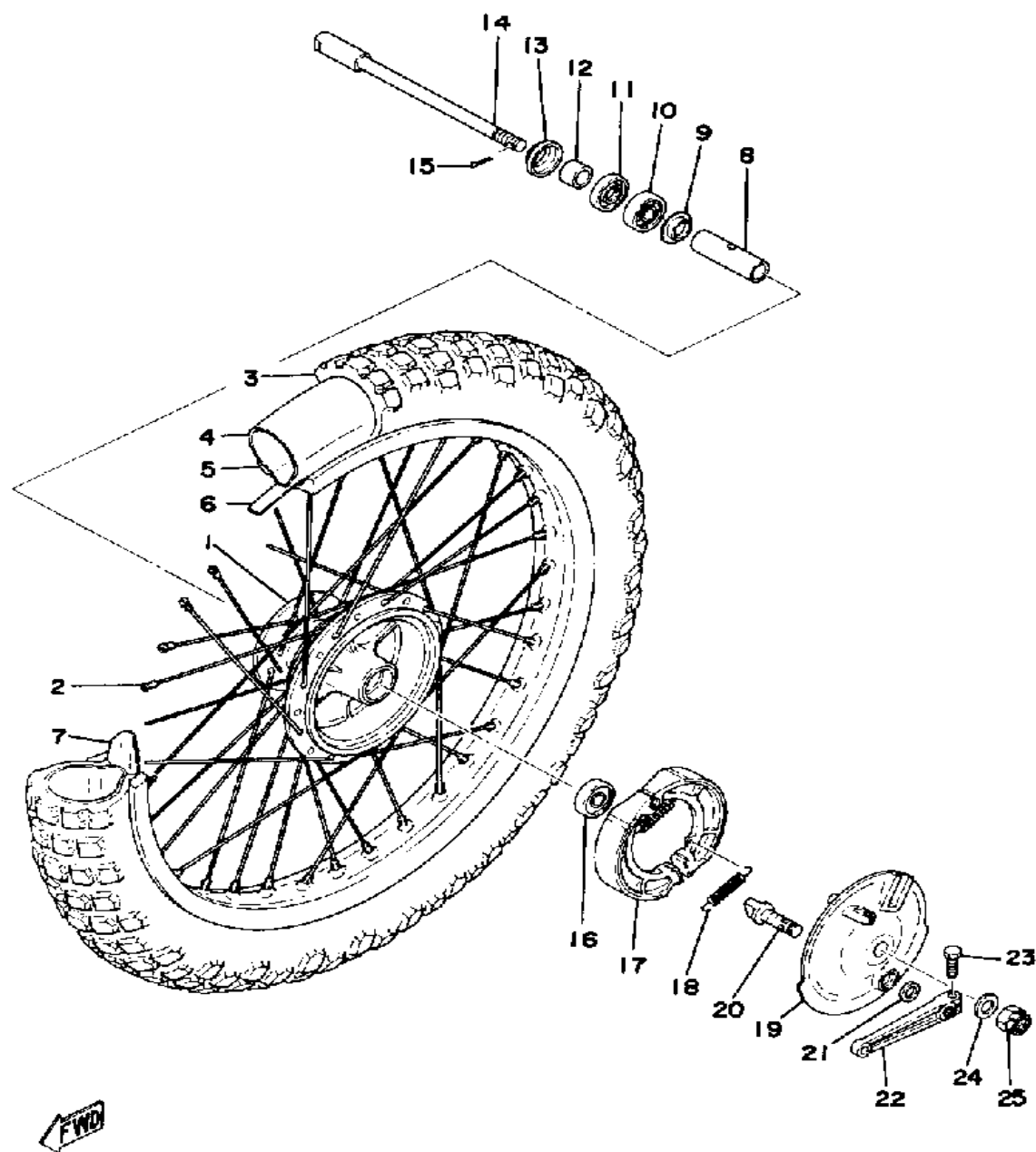
FUEL TANK

Ref. No.	Part Number	Description	Qty	Remarks
1	(99999-01006-00)	FUEL TANK COMP	1	
	1W1-24612-00-00	. GASKET, CAP	1	
	2A6-24611-00-00	. BODY, CAP	1	
	¢1T-12411-00-10	. UNAVAILABLE IN PRICE BOOK	1	
2	(1T1-24161-00-00)	EMBLEM 1	1	
3	(1T1-24162-00-00)	EMBLEM 2	1	
4	1T1-24163-00-00	EMBLEM 3	2	
5	322-24611-02-00	BODY, CAP	1	
6	90430-35122-00	GASKET	1	
7	90445-09111-00	HOSE	1	
8	90480-22177-00	GROMMET	2	
9	90387-086N4-00	COLLAR	2	
10	90201-06570-00	WASHER, PLATE	2	
11	92995-06100-00	WASHER, SPRING	2	
12	97021-06030-00	BOLT	2	
13	97313-08018-00	BOLT, HEXAGON (97301-08016)	1	
14	92990-08100-00	WASHER	1	
15	90209-08150-00	WASHER, SPEC'L SHAP (90209-08097)	1	
16	90480-22054-00	GROMMET	1	
17	583-24182-00-00	DAMPER, LOCATING 2	2	
18	322-24500-02-00	FUEL COCK ASSEMBLY 1 (322-24500-00)	1	
19	90467-11102-00	CLIP, SCISSOR	1	
20	90467-10008-00	CLIP	1	
21	90445-11288-00	HOSE	1	



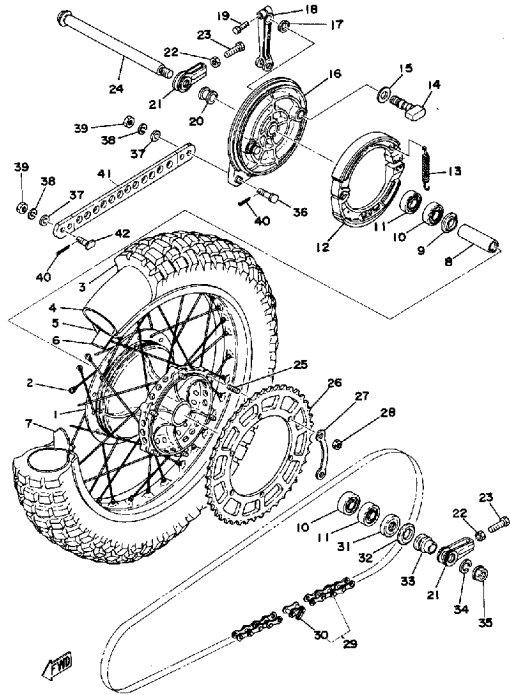
SEAT

Ref. No.	Part Number	Description	Qty	Remarks
1	(583-24770-00-00)	SEMI-DBL SEAT ASSEMBLY ..	1	
2	583-24771-00-00	. COVER, SM-DBL SEAT	1	
3	2Y0-24748-00-00	BRACKET, SEAT	1	
4	1T1-24738-00-00	BRACKET, SEAT	2	
5	90101-06304-00	BOLT	6	
6	97313-08016-00	BOLT, HEXAGON	2	
7	92990-08100-00	WASHER	2	
8	92901-08600-00	WASHER	2	
9	583-24724-00-00	DAMPER, SEAT	2	



FRONT WHEEL

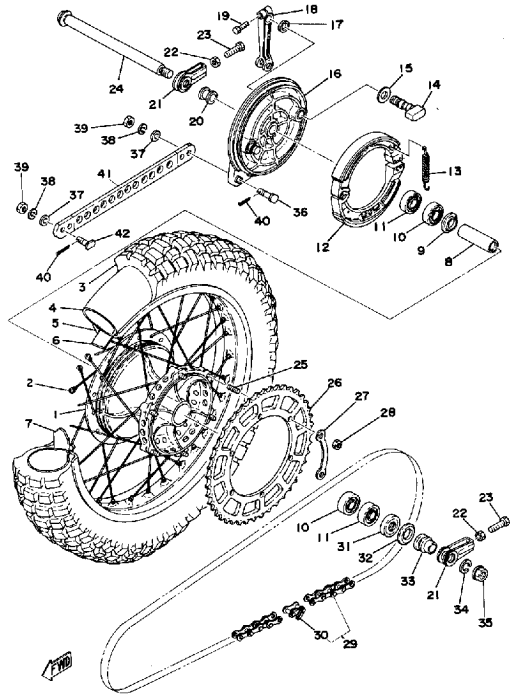
Ref. No.	Part Number	Description	Qty	Remarks
1	1K7-25111-10-98	HUB, FRONT	1	LOW GLOSS BLK
2	2W6-25104-02-00	SPOKE SET, FRONT	1	
3	(94130-21248-00)	300X21 DUN SR SPRT	1	
4	94227-21101-00	TUBE (80/100-21 TR4 BTL) ...	1	
5	94416-21326-00	RIM 1.60X 1	1	
6	(94327-21024-00)	BAND, RIM	1	
7	1T1-25194-00-00	SPACER, BEAD	1	
8	90560-15116-00	SPACER	1	
9	146-25116-00-00	FLANGE, SPACER 2	1	
10	93306-20209-00	BEARING (B6202)	1	
11	93102-20009-00	OIL SEAL	1	
12	90387-15418-00	COLLAR (322-25183-00)	1	
13	322-25118-00-00	COVER, HUB DUST	1	
14	583-25181-00-00	AXLE, WHEEL	1	
15	91401-30030-00	PIN, COTTER	1	
16	93306-20226-00	BEARING	1	
17	322-W2535-00-00	BRAKESHOE SET-2PCS	2	
18	90506-17328-00	SPRING, TENSION	2	
19	(483-25121-00-98)	PLATE, BRAKE SHOE	1	LOW GLOSS BLK
20	23X-25151-00-00	CAMSHAFT	1	
21	137-25159-00-00	SEAL, CAMSHAFT	1	
22	322-25155-00-00	LEVER, CAMSHAFT 1	1	
23	90101-06291-00	BOLT	1	
24	92990-14200-00	WASHER, PLAIN	1	
25	90171-14020-00	NUT, CASTLE	1	



REAR WHEEL

Ref. No.	Part Number	Description	Qty	Remarks
1	(483-25311-13-98)	HUB, REAR	1	LOW GLOSS BLK
2	431-25304-01-00	SPOKE SET, REAR (431-25304-00)	1	
3	(94146-18109-00)	460X18 DUN SR SPRT	1	
4	(94246-18040-00)	TUBE	1	
5	94421-18238-00	RIM 2.15X18 (94421-18151) (2.15-18)	1	
6	94340-18022-00	BAND, RIM (4.00-18)	1	
7	1T1-25394-01-00	SPACER, BEAD	2	
8	483-25317-01-00	SPACER, BEARING	1	
9	483-25315-00-00	FLANGE, SPACER	1	
10	93306-20310-00	BEARING	2	
11	93306-20333-00	BEARING	2	
12	431-W2536-00-00	BRAKESHOE SET-2PCS	2	
13	90507-20002-00	SPRING, TENSION	2	
14	(509-25351-00-00)	CAMSHAFT	1	
15	148-25353-00-00	SHIM, CAMSHAFT	1	
16	(483-25321-00-98)	PLATE, BRAKE SHOE	1	LOW GLOSS BLK
17	148-25359-00-00	SEAL, CAMSHAFT	1	
18	4V5-25355-00-00	LEVER, CAMSHAFT (168-25355-00)	1	
19	90101-06291-00	BOLT	1	
20	90387-17215-00	COLLAR	1	
21	48U-25388-00-00	PULLER, CHAIN 1	2	
22	95303-08700-00	NUT	2	
23	90101-08699-00	BOLT	2	
24	(431-25381-00-00)	AXLE, WHEEL	1	
25	90116-08218-00	BOLT, STUD	6	
26	(431-25448-04-XX)	SPROCKET, DRIVN 48T	1	
	(431-25452-04-XX)	SPROCKET, DRIVN 52T	1	

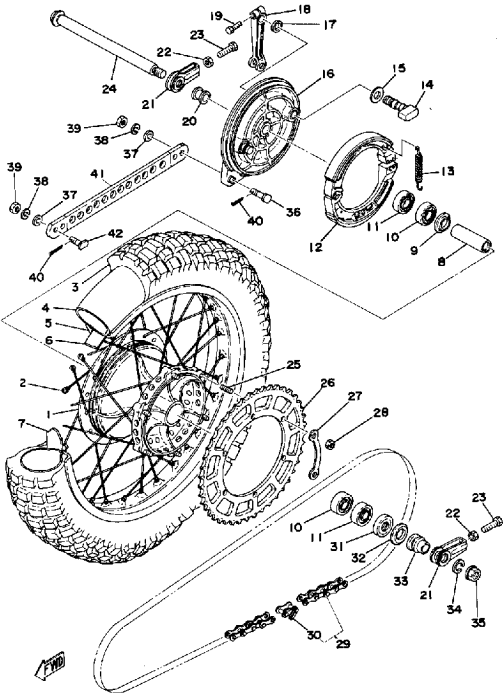
CONTINUED ON NEXT FRAME ➤



REAR WHEEL

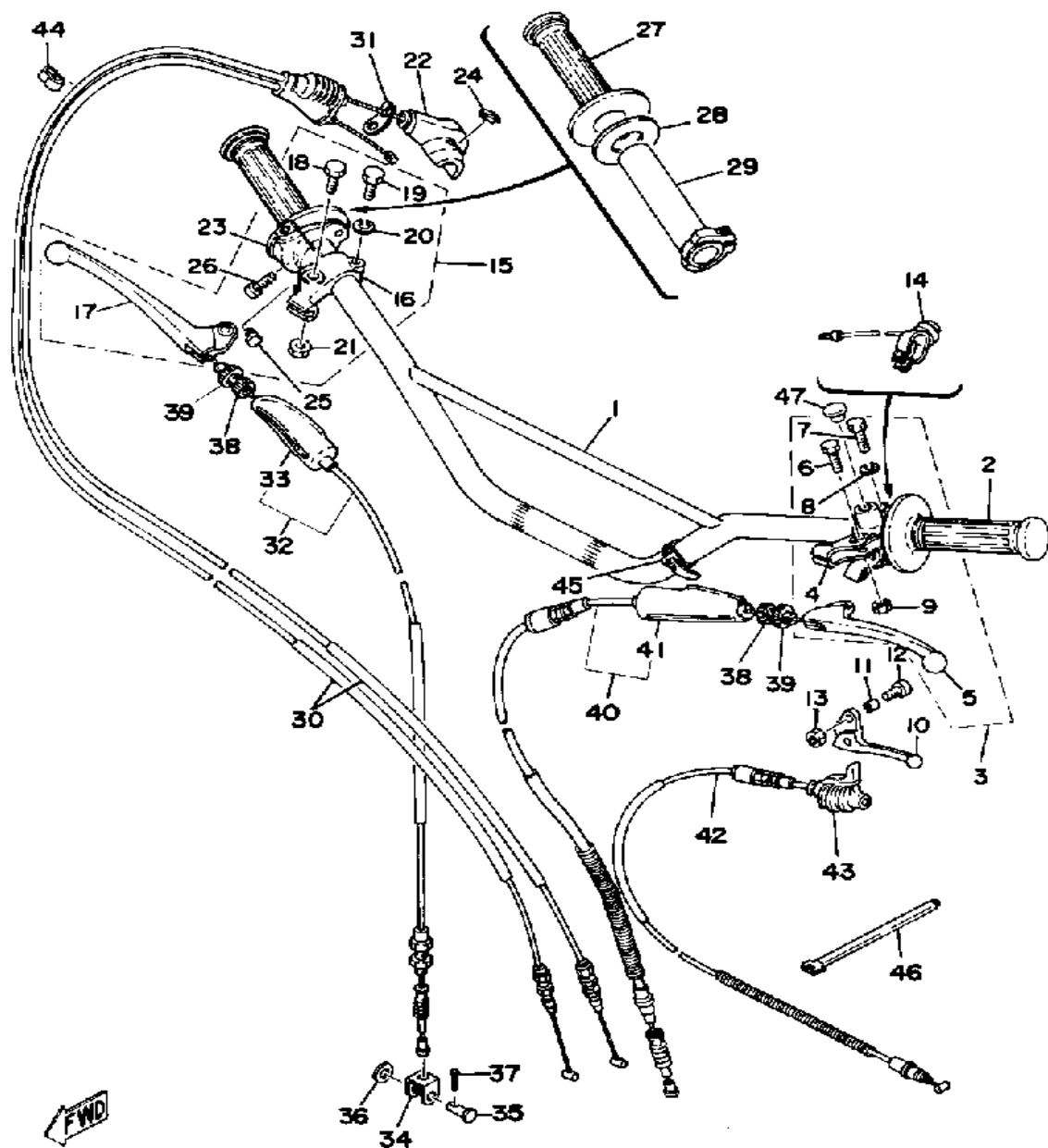
Ref. No.	Part Number	Description	Qty	Remarks
26	38W-25444-20-00	SPROCKET, DRIVN 44T	1	
	431-25450-04-XX	SPROCKET, DRIVN 50T	1	
	431-25454-04-XX	SPROCKET, DRIVN 54T	1	
	583-25440-10-00	SPROCKET, DRIVN 40T	1	
	583-25442-10-00	SPROCKET, DRIVN 42T	1	
	583-25446-10-00	SPROCKET, DRIVN 46T	1	
	583-25448-10-00	SPROCKET, DRIVN 48T (48T)	1	
	583-25450-10-00	SPROCKET, DRIVN 50T (50T)	1	STD
	583-25452-10-00	SPROCKET, DRIVN 52T (52T)	1	
	583-25454-10-00	SPROCKET, DRIVN 54T (54T)	1	
27	583-25412-00-00	WASHER	3	
28	90170-08193-00	NUT, HEXAGON	6	
29	(94515-20105-00)	520T 105L	1	
	94585-20105-00	520DS-104L (94515-20105)	1	
30	94685-20011-00	. JOINT CHAIN	1	
31	93102-25061-00	OIL SEAL, SD-TYPE	1	
32	431-25367-00-00	COVER, HUB DUST	1	
33	90387-17555-00	COLLAR	1	
34	92901-16100-00	WASHER, SPRING	1	
35	90170-16177-00	NUT, HEXAGON	1	
36	90109-08176-00	BOLT	1	
37	92990-08200-00	WASHER, PLAIN	2	
38	92990-08100-00	WASHER	2	
39	95303-08700-00	NUT	2	
40	91490-20020-00	PIN, COTTER	2	
41	(583-25371-00-00)	BAR, TENSION	1	
42	(90109-08378-00)	BOLT	1	

CONTINUED ON NEXT FRAME ➤



REAR WHEEL

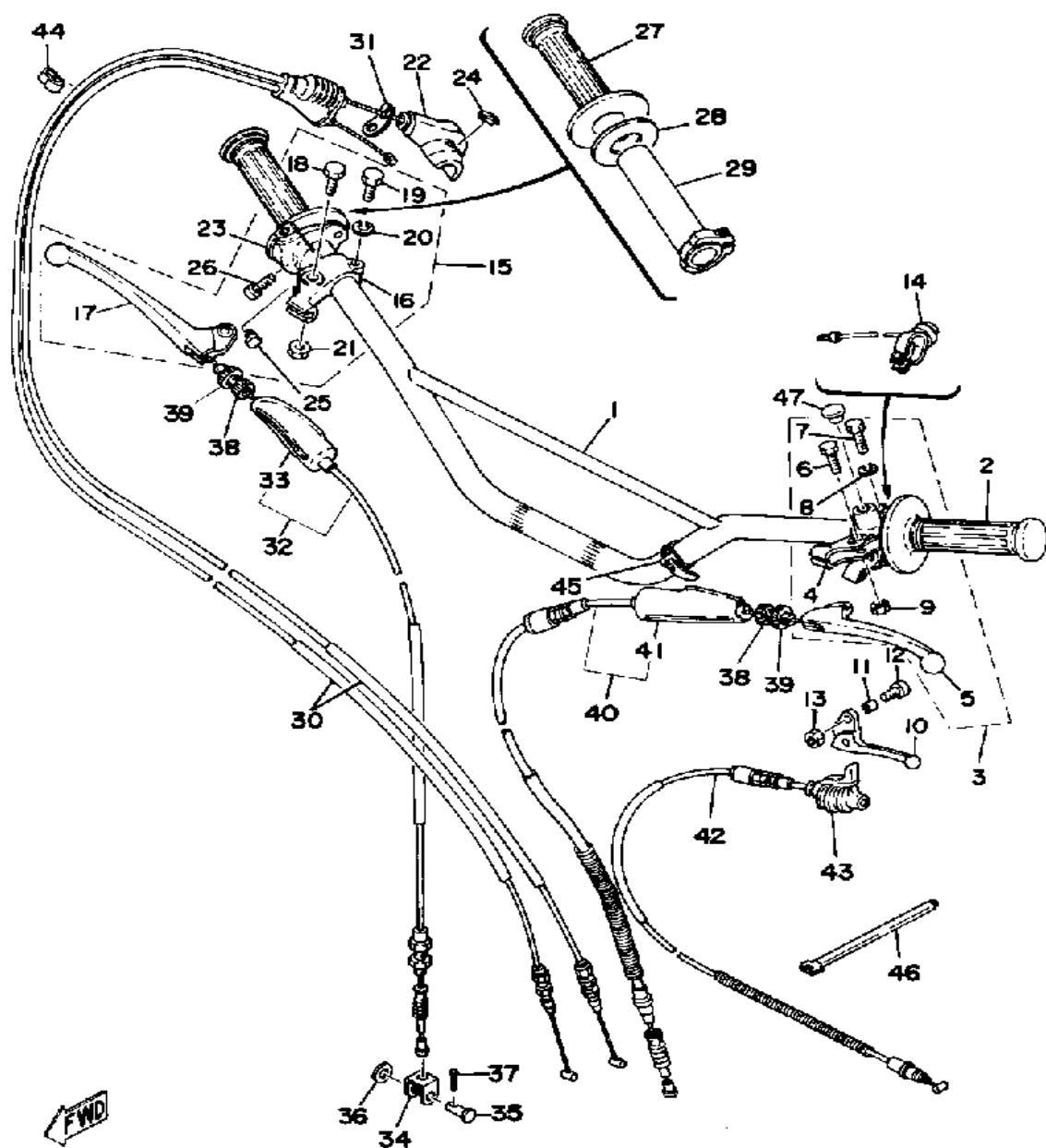
Ref. No.	Part Number	Description	Qty	Remarks
2-1	(431-25396-90-00)	SPOKE SET, INNER 2	1	
2-2	(431-25391-90-00)	SPOKE SET, INNER 1	1	
2-3	(431-25392-90-00)	SPOKE SET, OUTER 1	1	



HANDLEBAR - CABLE

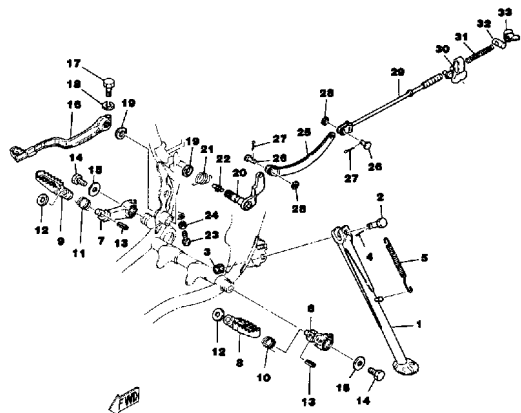
Ref. No.	Part Number	Description	Qty	Remarks
1	1T1-26111-00-00	HANDLEBAR	1	
2	1E6-26241-00-00	GRIP LH	1	
3	(583-82910-01-00)	LEVER HOLDER ASSEMBLY 1	1	LOW GLOSS BLK
4	583-82911-02-00	. HOLDER, LEVER 1	1	
5	1J3-83912-20-00	. LEVER L	1	
6	90109-06797-00	. BOLT	1	
7	97003-06022-00	. BOLT, HEXAGON (97301-06022)	1	
8	92995-06100-00	. WASHER, SPRING	1	
9	95601-06100-00	. NUT, U	1	
10	583-83981-00-00	LEVER, DECOMPRESSION ...	1	
11	583-83913-00-00	COLLAR, decompression lever	1	
12	98501-05018-00	SCREW, PAN HEAD	1	
13	95601-05100-00	NUT, U	1	
14	(583-83976-01-00)	SWITCH, HANDLE 1	1	
15	(583-82920-01-00)	LEVER HOLDER ASSEMBLY 2	1	LOW GLOSS BLK
16	233-82921-31-00	. HOLDER, LEVER 2	1	
17	2A6-83922-00-00	. LEVER R	1	
18	90109-06797-00	. BOLT	1	
19	97003-06022-00	. BOLT, HEXAGON (97301-06022)	1	
20	92995-06100-00	. WASHER, SPRING	1	
21	95601-06100-00	. NUT, U	1	
22	583-83986-00-00	CASE, SWITCH UPPER	1	
23	583-83987-00-00	CASE, SWITCH LOWER	1	
24	583-83956-00-00	CAP 1	1	
25	(583-83957-00-00)	CAP 2	1	
26	98580-06018-00	SCREW, PAN HEAD	2	
27	583-26242-00-00	GRIP RH	1	

CONTINUED ON NEXT FRAME ➤



HANDLEBAR - CABLE

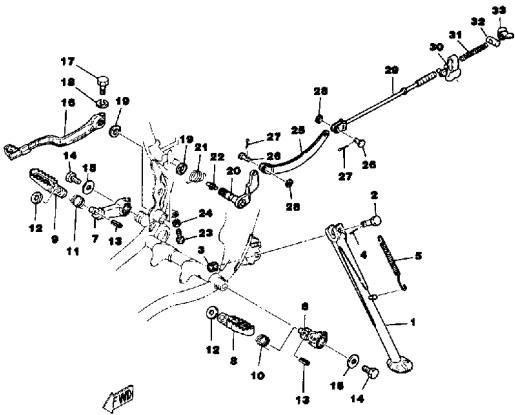
Ref. No.	Part Number	Description	Qty	Remarks
28	(583-26249-00-00)	RING, LEAF	1	
29	2H0-26243-00-00	TUBE, THRTL GUIDE	1	
30	583-26301-00-00	THROTTLE CABLE ASSEMBLY	1	
31	583-26398-00-00	WASHER	1	
32	1G8-26341-00-00	CABLE, BRAKE	1	
33	382-26372-01-00	. COVER, HANDLE LEVER ...	1	
34	156-26347-00-00	JOINT, CABLE	1	
35	90240-08013-00	PIN, CLEVIS	1	
36	90201-08083-00	WASHER, PLATE	1	
37	91490-20020-00	PIN, COTTER	1	
38	90123-08046-00	BOLT	2	
39	90179-08148-00	NUT	2	
40	583-26335-01-00	CABLE, CLUTCH (1100MM) ...	1	
41	382-26372-01-00	. COVER, HANDLE LEVER ...	1	
42	583-26331-00-00	CABLE, STARTER 1 (800MM) .	1	
43	583-26352-00-00	COVER, DECOMPRESSION CABLE	1	
44	90468-15009-00	CLIP	2	
45	437-83936-01-00	BAND, SWITCH CORD	2	
46	341-26397-01-00	BAND	1	
47	90338-09012-00	PLUG	1	



STAND - FOOTREST

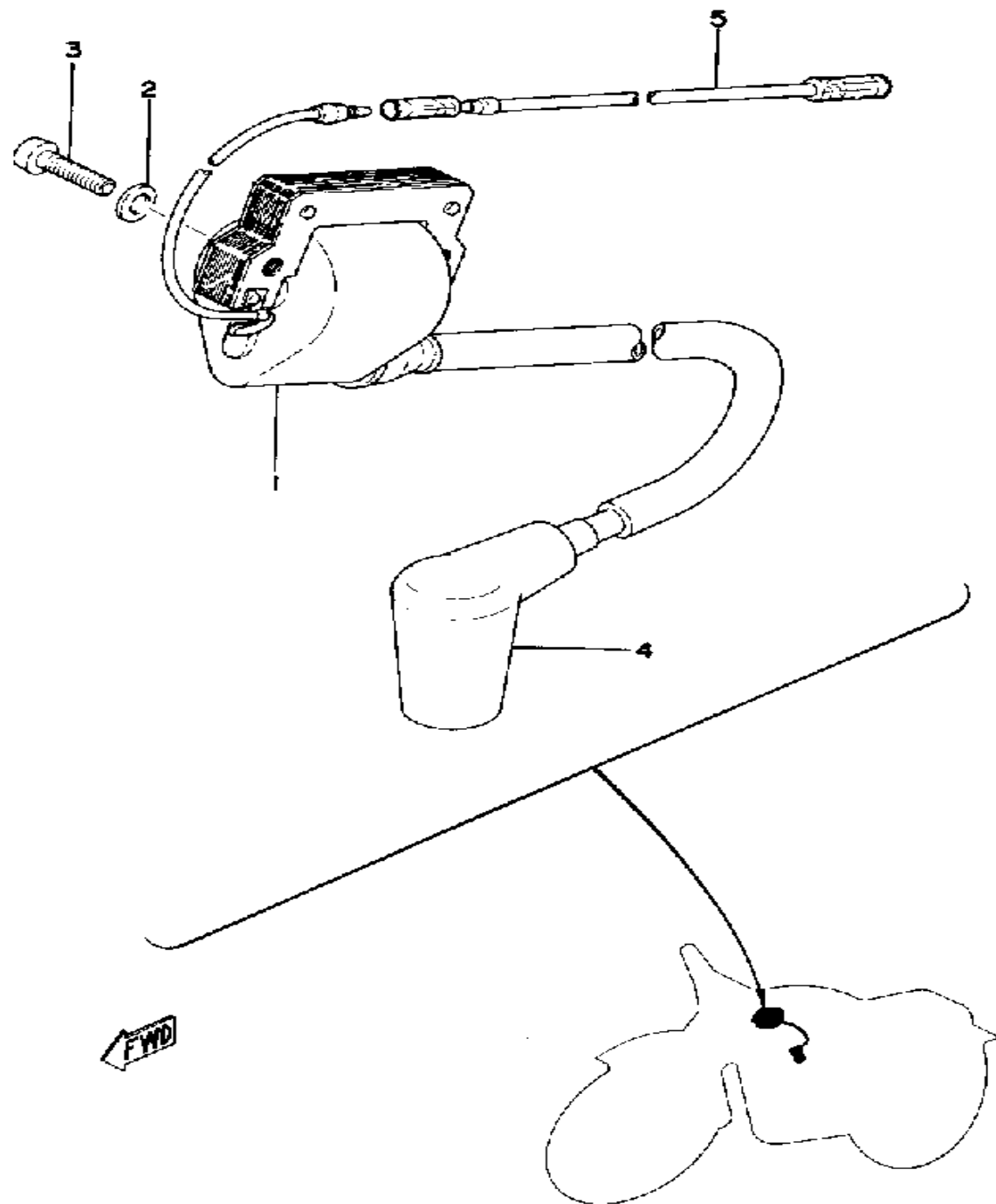
Ref. No.	Part Number	Description	Qty	Remarks
1	1T1-27311-00-33	STAND, SIDE (583-27311-00) ..	1	
2	90102-10006-00	BOLT, WITH HOLE (278-27317-00)	1	
3	95303-10900-00	NUT, SLOTTED	1	
4	91490-20025-00	PIN, SPLIT	1	
5	90507-29021-00	SPRING, TENSION	1	
6	2Y0-27412-00-33	BRACKET, FOOTREST 1	1	
7	2Y0-27422-00-33	BRACKET, FOOTREST 2	1	
8	583-27411-10-00	UNAVAILABLE IN PRICE BOOK	1	
9	583-27421-10-00	UNAVAILABLE IN PRICE BOOK	1	
10	90508-26277-00	SPRING, TORSION	1	
11	90508-26276-00	SPRING, TORSION	1	
12	90201-12631-00	WASHER, PLATE	2	
13	91609-30020-00	PIN, SPRING	2	
14	97011-10016-00	BOLT, HEXAGON	2	
15	90201-10639-00	WASHER, PLATE	2	
16	1U6-27211-00-93	PEDAL, BRAKE	1	
17	90109-06470-00	BOLT	1	
18	92995-06100-00	WASHER, SPRING	1	
19	498-27235-00-00	COVER, DUST	2	
20	1E6-27252-00-00	LEVER, BRAKE PEDAL	1	
21	90508-32278-00	SPRING, TORSION	1	
22	93700-06M03-00	NIPPLE, GREASE	1	
23	90153-06008-00	SCREW, HEXAGON	1	
24	90170-06184-00	NUT, HEXAGON	1	
25	583-27241-00-00	ROD, JOINT	1	
26	90240-08051-00	PIN, CLEVIS	2	
27	91490-20020-00	PIN, COTTER	2	
28	90201-08624-00	WASHER, PLATE	2	

CONTINUED ON NEXT FRAME ➤



STAND - FOOTREST

Ref. No.	Part Number	Description	Qty	Remarks
29	583-27231-00-00	ROD, BRAKE	1	
30	(583-27244-00-00)	COVER	1	
31	90501-10245-00	SPRING, COMPRESSION	1	
32	90249-12008-00	PIN	1	
33	90179-06006-00	NUT, SPEC'L SHAPE	1	



ELECTRICAL

Ref. No.	Part Number	Description	Qty	Remarks
1	583-82310-50-00	IGNITION COIL ASSEMBLY ...	1	
2	92901-06600-00	WASHER	2	
3	98580-06020-00	SCREW	2	
4	56J-82370-00-00	PLUG CAP ASSEMBLY	1	
5	(583-82521-00-00)	WIRE, LEAD	1	

MOTORCYCLE TT500D 1977 SERVICE DATA

MODEL — IBM I.D. NUMBER	TT500D	1T1
Starting Engine and Frame Number	1T1-000101	1T1-000101
Basic Color (fuel tank)	El Toro Orange	
Net Weight	271 lbs.	
ENGINE (type, induction system)	4-stroke, S.O.H.C., Single, Air-cooled	
Bore x Stroke x Cylinder(s)	87 x 84mm x 1	499cc (30.45 CID)
Compression Ratio (Pressure)	9.0:1	
Piston Skirt Clearance (new/max.)	.050~.055mm(.0020~.0022")/0.1mm(.004")	
Ring End Gap (top/2nd/3rd)	0.3~0.5mm(.012~.020")/Same/0.2~0.9mm(.008~.035")	
Ring Groove Clearance (top/2nd/3rd)	.04~.08mm(.0016~.0032")/.03~.07mm(.0012~.0028")/	
Valve Clearance (eng. cold) Intake/Exhaust	.07mm (.003") / 0.12mm (.005")	
AUTOLUBE — Minimum Pump Stroke/Color Code	φ	
CARBURETOR (mfr.) (type) (I.D. number)	Mikuni / VM34SS / 58360	
Main Jet	No. 240	
Needle Jet	Q-2	
Jet Needle/Clip Position	6H2-4	
Cutaway	4.0	
Pilot Jet	30	
Air Jet	0.8	
Starter Jet	No. 60	
Air Screw (turns out)	1%	
Float Level	22.0 ± 1.0mm	
Air Filter (type x quantity)	Oiled Foam Rubber x 1	
DRIVE — Primary (type) (teeth) (ratio)	Spur Gear	77/30 2.566
Secondary (type) (teeth) (ratio)	DID520T, 103L	52/15 3.466
Transmission Ratios 1st (teeth) (ratio) (O.A.)	33/14	2.357 20.973
2nd	22/18	1.555 13.840
3rd	25/21	1.190 10.592
4th	22/24	0.916 8.156
5th	21/27	0.777 6.920
6th	φ	
CAPACITIES — Transmission	φ	
Oil Tank or Engine Sump	2.5 qts. Dry / 2.1 qts. oil change SAE20W/40 Oil *	
Fuel Tank	2.3 gals. Premium	
Front Forks	224cc (7.6 oz.) 10, 20 or 30 wt. Fork Oil *	
Rear Shocks	φ	
Tires (size/nominal pressure)	Front: 3.00-21 / 13psi / Rear: 4.60-18 / 15psi	
ELECTRICAL — Charging System (mfr.) (type)	Nippon Denso / Flywheel Magneto	
No Load Voltage Adj. (AC & DC generators)	φ	
Max. Generator (Magneto) Output	φ	
Field Coil (and/or) Charging Coil Resistance	Red/Yellow - 0.341 ± 10%	
Battery (mfr.) (model) (charging rate)	φ	
Headlight/Tailight Ratings	φ	
Ign. Coil Min. Spark Gap/Pri. Res./Sec. Res.	N/A / 0.75 Ω / 5.7K Ω	
Source Coil Res./Pulse Coil Res.	2.2 Ω / φ	
Condenser Capacity	0.22μF	
Point Gap/Spark Plug (type/gap)	0.35 ± .05mm/NGK BP-7ES/0.7~0.8mm(SEE NOTE)	
Timing (advanced) (retarded)	27 ± 3° B.T.D.C. / 7° B.T.D.C.	

N/A = Information Not Available * Available from Yamaha Parts Distributors, Inc.
φ = Does Not Apply To This Model **NOTE:** Using conventional instead of "P" (projected nose) spark plug will result in significant horsepower loss.

D-9



TECHNICAL BULLETIN

MOTORCYCLE TT500D M6-042

TT500D 1977 SERVICE DATA

MODEL — IBM I.D. NUMBER	TT500D	1T1
Starting Engine and Frame Number	1T1-000101	1T1-000101
Basic Color (fuel tank)	El Toro Orange	
Net Weight	271 lbs.	
ENGINE (type, induction system)	4-stroke, S.O.H.C., Single, Air-cooled	
Bore x Stroke x Cylinder(s)	87 x 84mm x 1	499cc (30.45 CID)
Compression Ratio (Pressure)	9.0:1	
Piston Skirt Clearance (new/max.)	.050~.055mm(.0020~.0022")/0.1mm(.004")	
Ring End Gap (top/2nd/3rd)	0.3~0.5mm(.012~.020")/Same/0.2~0.9mm(.008~.035")	
Ring Groove Clearance (top/2nd/3rd)	.04~.08mm(.0016~.0032")/.03~.07mm(.0012~.0028")/	
Valve Clearance (eng. cold) Intake/Exhaust	.07mm (.003") / 0.12mm (.005")	
AUTOLUBE — Minimum Pump Stroke/Color Code	φ	
CARBURETOR (mfr.) (type) (I.D. number)	Mikuni / VM34SS / 58360	
Main Jet	No. 240	
Needle Jet	Q-2	
Jet Needle/Clip Position	6H2-4	
Cutaway	4.0	
Pilot Jet	30	
Air Jet	0.8	
Starter Jet	No. 60	
Air Screw (turns out)	1%	
Float Level	22.0 ± 1.0mm	
Air Filter (type x quantity)	Oiled Foam Rubber x 1	
DRIVE — Primary (type) (teeth) (ratio)	Spur Gear	77/30 2.566
Secondary (type) (teeth) (ratio)	DID520T, 103L	52/15 3.466
Transmission Ratios 1st (teeth) (ratio) (O.A.)	33/14	2.357 20.973
2nd	22/18	1.555 13.840
3rd	25/21	1.190 10.592
4th	22/24	0.916 8.156
5th	21/27	0.777 6.920
6th	φ	
CAPACITIES — Transmission	φ	
Oil Tank or Engine Sump	2.5 qts. Dry / 2.1 qts. oil change SAE20W/40 Oil *	
Fuel Tank	2.3 gals. Premium	
Front Forks	224cc (7.6 oz.) 10, 20 or 30 wt. Fork Oil *	
Rear Shocks	φ	
Tires (size/nominal pressure)	Front: 3.00-21 / 13psi / Rear: 4.60-18 / 15psi	
ELECTRICAL — Charging System (mfr.) (type)	Nippon Denso / Flywheel Magneto	
No Load Voltage Adj. (AC & DC generators)	φ	
Max. Generator (Magneto) Output	φ	
Field Coil (and/or) Charging Coil Resistance	Red/Yellow - 0.341 ± 10%	
Battery (mfr.) (model) (charging rate)	φ	
Headlight/Tailight Ratings	φ	
Ign. Coil Min. Spark Gap/Pri. Res./Sec. Res.	N/A / 0.75 Ω / 5.7K Ω	
Source Coil Res./Pulse Coil Res.	2.2 Ω / φ	
Condenser Capacity	0.22μF	
Point Gap/Spark Plug (type/gap)	0.35 ± .05mm/NGK BP-7ES/0.7~0.8mm(SEE NOTE)	
Timing (advanced) (retarded)	27 ± 3° B.T.D.C. / 7° B.T.D.C.	

N/A = Information Not Available * Available from Yamaha Parts Distributors, Inc.
φ = Does Not Apply To This Model **NOTE:** Using conventional instead of "P" (projected nose) spark plug will result in significant horsepower loss.